

Syndecan-3 Polyclonal Antibody

Catalog number: 10886-1-AP

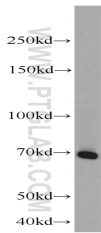
Size: 30 µg/150 µl

Source: Rabbit

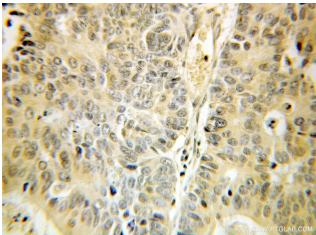
Isotype: IgG

Synonyms:

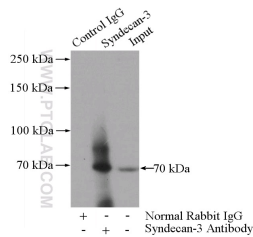
SDC3; KIAA0468, N syndecan, SDC3, SDCN, SYND3, syndecan 3, Syndecan3



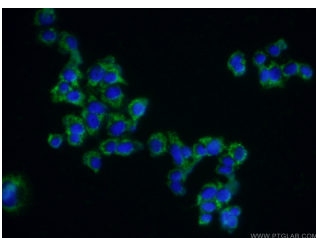
A549 cells were subjected to SDS PAGE followed by western blot with 10886-1-AP(SDC3 antibody) at dilution of 1:1000



Immunohistochemical of paraffin-embedded human colon cancer using 10886-1-AP(SDC3 antibody) at dilution of 1:100 (under 25x lens)



IP Result of anti-SDC3 (IP:10886-1-AP, 4µg; Detection:10886-1-AP 1:1000) with mouse lung tissue lysate 4000µg.



Immunofluorescent analysis of (-20 Ethanol) fixed PC-12 cells using 10886-1-AP(SDC3

Background

Syndecan-3 is a member of the Syndecan proteoglycan family. It plays a role in the organization of cell shape by affecting the actin cytoskeleton, possibly by transferring signals from the cell surface in a sugar-dependent mechanism.

Applications

Tested applications:	ELISA, WB, IHC, IP, IF
Cited applications:	IHC
Species specificity:	Human, Mouse, Rat; other species not tested.
Cited species:	Human
Calculated Syndecan-3 MW:	38 kDa
Observed Syndecan-3 MW:	60-70 kDa
Positive WB detected in	A549 cells, Jurkat cells, L02 cells, MCF7 cells, mouse kidney tissue, mouse lung tissue, rat kidney tissue, SH-SY5Y cells
Positive IP detected in	Mouse lung tissue, A549 cells
Positive IHC detected in	Human colon cancer tissue
Positive IF detected in	PC-12 cells, MCF-7 cells
Recommended dilution:	WB: 1:500-1:5000 IP: 1:500-1:5000 IHC: 1:20-1:200 IF: 1:50-1:500

Application key: WB = Western blotting, IHC = Immunohistochemistry, IF = Immunofluorescence, IP = Immunoprecipitation

Immunogen information

Immunogen:	Ag1317
GenBank accession number:	BC013974
Gene ID (NCBI):	9672
Full name:	Syndecan 3

Product information

Purification method:	Antigen affinity purification
Storage:	PBS with 0.1% sodium azide and 50% glycerol pH 7.3. Store at -20°C.

Antibody) at dilution of 1:50
and Alexa Fluor 488-
conjugated AffiniPure Goat
Anti-Rabbit IgG(H+L)