

## CCT8 Polyclonal Antibody

Catalog number: 12263-1-AP

Size: 22 µg/150 µl

Source: Rabbit

Isotype: IgG

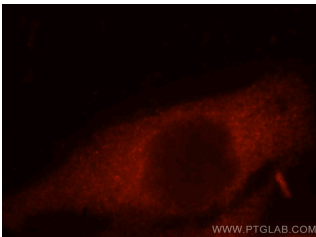
Synonyms:

CCT8; C21orf112, CCT theta,

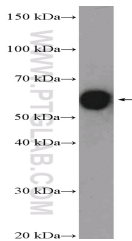
CCT8, Cctq, D21S246,

KIAA0002, PRED71, TCP 1

theta



Immunofluorescent analysis of MCF-7 cells, using CCT8 antibody 12263-1-AP at 1:25 dilution and Rhodamine-labeled goat anti-rabbit IgG (red).



mouse kidney tissue were subjected to SDS PAGE followed by western blot with 12263-1-AP (CCT8 Antibody) at dilution of 1:1500

### Background

CCT8, also named as C21orf112, CCTQ, KIAA0002, CCT-theta, TCP-1-theta and NY-REN-15, belongs to the TCP-1 chaperonin family. It is a molecular chaperone; assists the folding of proteins upon ATP hydrolysis. As part of the BBS/CCT complex, CCT8 may play a role in the assembly of BBSome, a complex involved in ciliogenesis regulating transports vesicles to the cilia. Known to play a role, in vitro, in the folding of actin and tubulin. (PMID:20080638)

### Applications

<b>Tested applications:</b>	ELISA, IF, WB
<b>Cited applications:</b>	IF, WB
<b>Species specificity:</b>	Human, Mouse, Rat, Zebrafish; other species not tested.
<b>Cited species:</b>	Human, mouse
<b>Calculated CCT8 MW:</b>	548aa, 60 kDa
<b>Observed CCT8 MW:</b>	60kd
<b>Positive WB detected in</b>	Mouse kidney tissue, Jurkat cells, Raji cells
<b>Positive IF detected in</b>	MCF-7 cells
<b>Recommended dilution:</b>	WB: 1:500-1:5000 IF: 1:10-1:100

Application key: WB = Western blotting, IHC = Immunohistochemistry, IF = Immunofluorescence, IP = Immunoprecipitation

### Immunogen information

<b>Immunogen:</b>	Ag2926
<b>GenBank accession number:</b>	BC012584
<b>Gene ID (NCBI):</b>	10694
<b>Full name:</b>	Chaperonin containing TCP1, subunit 8 (theta)

### Product information

<b>Purification method:</b>	Antigen affinity purification
<b>Storage:</b>	PBS with 0.1% sodium azide and 50% glycerol pH 7.3. Store at -20°C.