

IL17RE Polyclonal Antibody

Catalog number: 11984-1-AP

Size: 20 µg/150 µl

Source: Rabbit

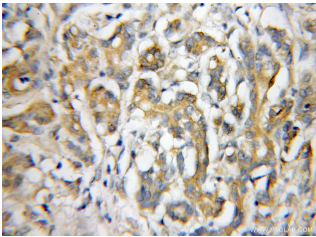
Isotype: IgG

Synonyms:

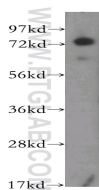
IL17RE; FLJ23658, IL 17

receptor E, IL 17RE, IL17RE,

interleukin 17 receptor E



Immunohistochemical of paraffin-embedded human pancreas cancer using 11984-1-AP (IL17RE antibody) at dilution of 1:50 (under 10x lens)



human kidney tissue were subjected to SDS PAGE followed by western blot with 11984-1-AP (IL17RE antibody) at dilution of 1:400

Background

IL17RE, is a specific functional receptor for IL17C. It may be signaling through the NF-kappa-B and MAPK pathways. IL17Re may be a crucial regulator in innate immunity to bacterial pathogens. IL17RE has five isoforms with MW 31 kDa, 43 kDa, 58-62 kDa and 75 kDa.

Applications

Tested applications:	ELISA, WB, IHC
Cited applications:	WB
Species specificity:	Human; other species not tested.
Cited species:	Human
Calculated IL17RE MW:	667aa, 75 kDa
Observed IL17RE MW:	75 kDa
Positive WB detected in	Human kidney tissue, PC-3 cells
Positive IHC detected in	Human pancreas cancer tissue
Recommended dilution:	WB: 1:200-1:2000 IHC: 1:20-1:200

Application key: WB = Western blotting, IHC = Immunohistochemistry, IF = Immunofluorescence, IP = Immunoprecipitation

Immunogen information

Immunogen:	Ag2612
GenBank accession number:	BC063110
Gene ID (NCBI):	132014
Full name:	Interleukin 17 receptor E

Product information

Purification method:	Antigen affinity purification
Storage:	PBS with 0.1% sodium azide and 50% glycerol pH 7.3. Store at -20°C.