

MRFAP1 Polyclonal Antibody

Catalog number: 11639-1-AP

Size: 22 µg/150 µl

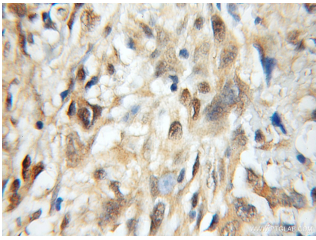
Source: Rabbit

Isotype: IgG

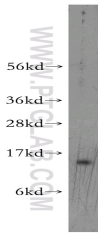
Synonyms:

MRFAP1; MRFAP1, PAM14,

PGR1, Protein PGR1



Immunohistochemical of paraffin-embedded human gliomas using 11639-1-AP(MRFAP1 antibody) at dilution of 1:50 (under 10x lens)



Jurkat cells were subjected to SDS PAGE followed by western blot with 11639-1-AP(MRFAP1 antibody) at dilution of 1:400

Background

MRFAP1, also named as PAM14 and PGR1, is a 14 kDa protein which associated with MRG. It is found in a complex composed of MORF4L1, MRFAP1 and RB1. MRFAP1 interacts via its N-terminus with MORF4L1. And it interacts with CSTB and MORF4L2.

Applications

Tested applications:	ELISA, WB, IHC
Cited applications:	IP, WB
Species specificity:	Human; other species not tested.
Cited species:	Human, monkey
Calculated MRFAP1 MW:	127aa,15 kDa
Observed MRFAP1 MW:	15kd
Positive WB detected in	Jurkat cells
Positive IHC detected in	Human gliomas tissue
Recommended dilution:	WB: 1:200-1:1000 IHC: 1:20-1:200

Application key: WB = Western blotting, IHC = Immunohistochemistry, IF = Immunofluorescence, IP = Immunoprecipitation

Immunogen information

Immunogen:	Ag2227
GenBank accession number:	BC022797
Gene ID (NCBI):	93621
Full name:	Mof4 family associated protein 1

Product information

Purification method:	Antigen affinity purification
Storage:	PBS with 0.1% sodium azide and 50% glycerol pH 7.3. Store at -20°C.