

CAMK2 Polyclonal Antibody

Catalog number: 13730-1-AP

Size: 23 µg/150 µl

Source: Rabbit

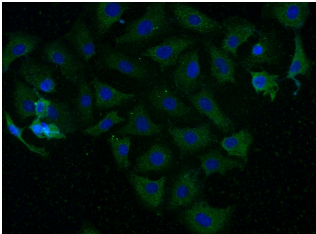
Isotype: IgG

Synonyms:

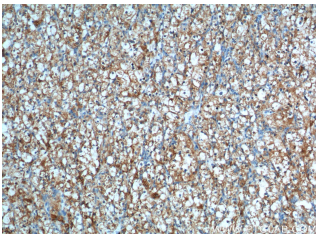
CAMK2A; CaM kinase II subunit alpha, CaMK II subunit alpha, CAMK2, CAMK2A, CAMKA, CaMKII alpha, KIAA0968



HEK-293 cells were subjected to SDS PAGE followed by western blot with 13730-1-AP (CAMK2A antibody) at dilution of 1:400



Immunofluorescent analysis of (-20 Ethanol) fixed SH-SY5Y cells using 13730-1-AP (CAMK2A Antibody) at dilution of 1:50 and Alexa Fluor 488-conjugated AffiniPure Goat Anti-Rabbit IgG(H+L)



Immunohistochemistry of paraffin-embedded human renal cell carcinoma tissue slide using 13730-1-AP (CAMK2A Antibody) at dilution of 1:200 (under 10x lens).

Background

CaM-kinase II (CAMK2) is a prominent kinase in the central nervous system that may function in long-term potentiation and neurotransmitter release. It is a member of the NMDAR signaling complex in excitatory synapses it may regulate NMDAR-dependent potentiation of the AMPAR and synaptic plasticity. The antibody 13730-1-AP can recognize the members of CAMK2 family.

Applications

Tested applications:	ELISA, WB, IF, IHC
Species specificity:	Human, Mouse, Rat; other species not tested.
Calculated CAMK2 MW:	478aa, 54 kDa
Observed CAMK2 MW:	45 kDa
Positive WB detected in	HEK-293 cells
Positive IHC detected in	Human renal cell carcinoma tissue
Positive IF detected in	SH-SY5Y cells
Recommended dilution:	WB: 1:200-1:2000
	IHC: 1:50-1:500
	IF: 1:20-1:200

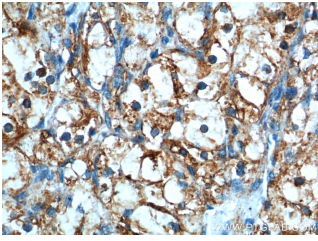
Application key: WB = Western blotting, IHC = Immunohistochemistry, IF = Immunofluorescence, IP = Immunoprecipitation

Immunogen information

Immunogen:	Ag4745
GenBank accession number:	BC040457
Gene ID (NCBI):	815
Full name:	Calcium/calmodulin-dependent protein kinase II alpha

Product information

Purification method:	Antigen affinity purification
Storage:	PBS with 0.02% sodium azide and 50% glycerol pH 7.3. Store at -20°C.



Immunohistochemistry of paraffin-embedded human renal cell carcinoma tissue slide using 13730-1-AP (CAMK2A Antibody) at dilution of 1:200 (under 40x lens).