

ACTN2 Polyclonal Antibody

Catalog number: 14221-1-AP

Size: 29 µg/150 µl

Source: Rabbit

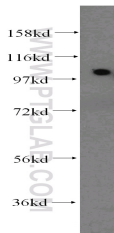
Isotype: IgG

Synonyms:

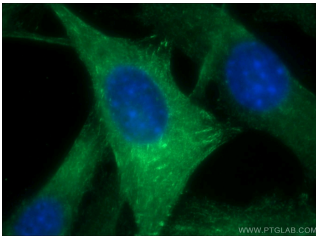
ACTN2; actinin, alpha 2, ACTN2,

Alpha actinin 2, CMD1AA, F

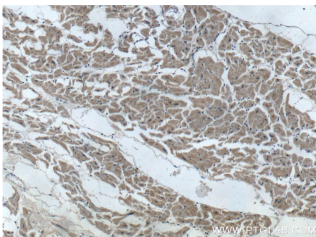
actin cross linking protein



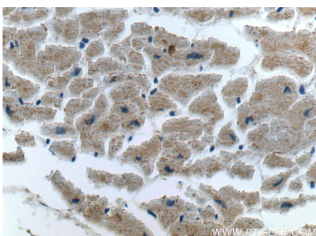
HeLa cells were subjected to SDS PAGE followed by western blot with 14221-1-AP (ACTN2 antibody) at dilution of 1:400



Immunofluorescent analysis of (-20 Ethanol) fixed NIH/3T3 cells using 14221-1-AP (ACTN2 Antibody) at dilution of 1:50 and Alexa Fluor 488-conjugated AffiniPure Goat Anti-Rabbit IgG(H+L)



Immunohistochemistry of paraffin-embedded human heart tissue slide using 14221-1-AP (ACTN2 Antibody) at dilution of 1:200 (under 10x lens).



Immunohistochemistry of

Applications

Tested applications:

ELISA, WB, IP, IF, IHC

Species specificity:

Human, Mouse, Rat; other species not tested.

Calculated ACTN2 MW:

104 kDa

Observed ACTN2 MW:

103 kDa

Positive WB detected in

HeLa cells, mouse lung tissue, mouse skeletal muscle tissue

Positive IP detected in

HeLa cells

Positive IHC detected in

Human heart tissue

Positive IF detected in

NIH/3T3 cells

Recommended dilution:

WB: 1:500-1:5000

IP: 1:500-1:5000

IHC: 1:20-1:200

IF: 1:20-1:200

Application key: WB = Western blotting, IHC = Immunohistochemistry, IF = Immunofluorescence, IP = Immunoprecipitation

Immunogen information

Immunogen:

Ag5459

GenBank accession number:

BC051770

Gene ID (NCBI):

88

Full name:

Actinin, alpha 2

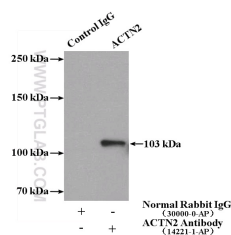
Product information

Purification method:

Antigen affinity purification

Storage:

PBS with 0.02% sodium azide and 50% glycerol pH 7.3. Store at -20°C.



IP Result of anti-ACTN2

paraffin-embedded human heart tissue slide using 14221-1-AP (ACTN2 Antibody) at dilution of 1:200 (under 40x lens). (IP:14221-1-AP, 4ug; Detection:14221-1-AP 1:1000) with HeLa cells lysate 1080ug.