

RECQL5 Polyclonal Antibody

Catalog number: 12468-2-AP

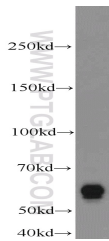
Size: 20 µg/150 µl

Source: Rabbit

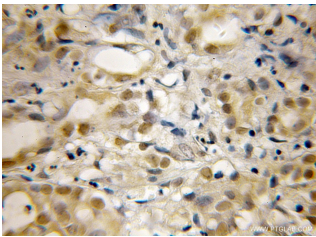
Isotype: IgG

Synonyms:

RECQL5; FLJ90603; RECQ5



mouse testis tissue were subjected to SDS PAGE followed by western blot with 12468-2-AP(RECQL5 Antibody) at dilution of 1:1000



Immunohistochemistry of paraffin-embedded human pancreas cancer using 12468-2-AP(RECQL5 Antibody) at Dilution 1:50 (under 10x lens)



Immunofluorescent analysis of HepG2 cells, using RECQL5 antibody 12468-2-AP at 1:100 dilution and FITC-labeled donkey anti-rabbit IgG(green). Blue pseudocolor = DAPI (fluorescent DNA dye).

Applications

Tested applications:	ELISA, WB, IHC, IF
Species specificity:	Human, mouse, rat; other species not tested.
Positive WB detected in:	Mouse testis tissue, HeLa cells, Jurkat cells
Calculated RECQL5 MW:	435aa,49kd,409kd
Observed RECQL5 MW:	45 kDa
Positive IHC detected in:	Human pancreas cancer
Positive IF detected in:	HepG2 cells
Recommended dilution:	WB: 1:500-1:5000 IHC: 1:20-1:200 IF: 1:50-1:200

Application key: WB = Western blotting, IHC = Immunohistochemistry, IF = Immunofluorescence, IP = Immunoprecipitation, FC = Flow cytometry

Immunogen information

Immunogen:	Ag3145
GenBank accession number:	BC016911
Gene ID (NCBI):	9400
Full name:	RecQ protein-like 5

Product information

Purification method:	Antigen affinity purification
Storage:	PBS with 0.02% sodium azide and 50% glycerol pH 7.3. Store at -20°C.