

ARL8B Polyclonal Antibody

Catalog number: 13049-1-AP

Size: 30 µg/150 µl

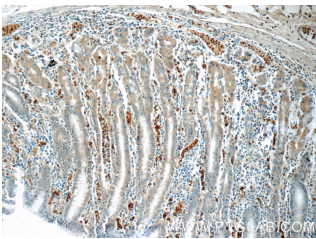
Source: Rabbit

Isotype: IgG

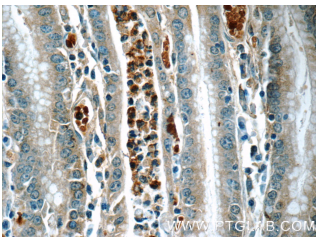
Synonyms:

ARL8B; ARL10C, ARL8B,

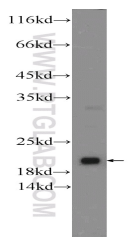
FLJ10702, Gie1



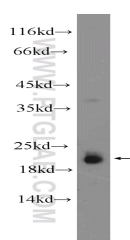
Immunohistochemistry of paraffin-embedded human stomach tissue slide using 13049-1-AP(ARL8B Antibody) at dilution of 1:50 (under 10x lens)



Immunohistochemistry of paraffin-embedded human stomach tissue slide using 13049-1-AP(ARL8B Antibody) at dilution of 1:50 (under 40x lens)



fetal human brain tissue were subjected to SDS PAGE followed by western blot with 13049-1-AP(ARL8B Antibody) at dilution of 1:600



NIH/3T3 cells were subjected to SDS PAGE followed by

Background

ARL8B (ADP-ribosylation factor-like 8B) , also known as ARL10C or GIE1, is a small GTPase of the Arl-family, that is associated with the lysosome. ARL8A interacts with Tubulin, and plays a role in lysosome motility, as well as in chromosomal segregation. ARL8B plays a role in the spatial distribution and positioning of lysosomes. Arl8b is regarded as a regulator of endosome to lysosome trafficking pathways of special significance for host defense.

Applications

Tested applications:	ELISA, IHC, WB
Cited applications:	IF, WB
Species specificity:	Human, Mouse, Rat; other species not tested.
Cited species:	Human
Calculated ARL8B MW:	186aa, 22 kDa
Observed ARL8B MW:	22 kDa
Positive WB detected in	Fetal human brain tissue, human brain tissue, NIH/3T3 cells
Positive IHC detected in	Human stomach tissue
Recommended dilution:	WB: 1:200-1:2000 IHC: 1:20-1:200

Application key: WB = Western blotting, IHC = Immunohistochemistry, IF = Immunofluorescence, IP = Immunoprecipitation

Immunogen information

Immunogen:	Ag3711
GenBank accession number:	BC013131
Gene ID (NCBI):	55207
Full name:	ADP-ribosylation factor-like 8B

Product information

Purification method:	Antigen affinity purification
Storage:	PBS with 0.1% sodium azide and 50% glycerol pH 7.3. Store at -20°C.

western blot with 13049-1-
AP(ARL8B Antibody) at
dilution of 1:1000