

CLINT1 Polyclonal Antibody

Catalog number: 10470-1-AP

Size: 45 µg/150 µl

Source: Rabbit

Isotype: IgG

Synonyms:

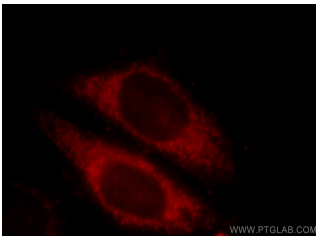
CLINT1; clathrin interactor 1,

CLINT, CLINT1, ENTH,

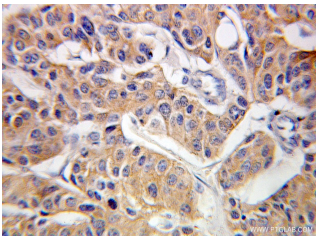
Enthoprotin, EPN4, EPNR,

Epsin 4, Epsin related protein,

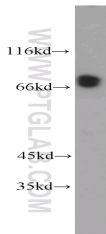
EPSINR, FLJ46753, KIAA0171



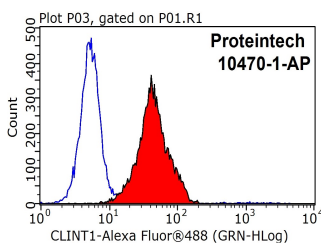
Immunofluorescent analysis of HepG2 cells, using CLINT1 antibody 10470-1-AP at 1:25 dilution and Rhodamine-labeled goat anti-rabbit IgG (red).



Immunohistochemical of paraffin-embedded human breast cancer using 10470-1-AP (CLINT1 antibody) at dilution of 1:100 (under 40x lens)



HeLa cells were subjected to SDS PAGE followed by western blot with 10470-1-AP (CLINT1 antibody) at dilution of 1:1000



Background

Clathrin interactor 1 (CLINT1), also known as enthoprotin or epsin-4, belongs to the epsin family of endocytic adapter proteins. CLINT1 interacts with clathrin, the adapter protein AP-1 and phosphoinositides. It may have a role in the formation of clathrin coated vesicles and trafficking between the trans-Golgi network and endosomes. Mutations in the gene of CLINT1 are associated with a susceptibility to schizophrenia and psychotic disorders. Calculated molecular weight of CLINT1 is 68 kDa. The migration of endogenous CLINT1 at 80 kDa has also been reported (PMID: 12213833; 15811338).

Applications

Tested applications:	ELISA, WB, IHC, IF, FC, IP
Species specificity:	Human, Mouse, Rat; other species not tested.
Calculated CLINT1 MW:	68 kDa
Observed CLINT1 MW:	68 kDa, 80 kDa
Positive WB detected in	HeLa cells, HEK-293 cells, mouse brain tissue
Positive IP detected in	HeLa cells
Positive IHC detected in	Human breast cancer tissue
Positive IF detected in	HepG2 cells
Positive FC detected in	HepG2 cells
Recommended dilution:	WB: 1:500-1:5000 IP: 1:500-1:5000 IHC: 1:20-1:200 IF: 1:10-1:100 FC: N/A

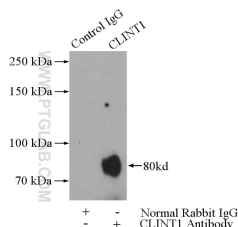
Application key: WB = Western blotting, IHC = Immunohistochemistry, IF = Immunofluorescence, IP = Immunoprecipitation

Immunogen information

Immunogen:	Ag0754
GenBank accession number:	BC004467
Gene ID (NCBI):	9685
Full name:	Clathrin interactor 1

Product information

Purification method:	Antigen affinity purification
Storage:	PBS with 0.1% sodium azide and 50% glycerol pH 7.3. Store at -20°C.



1X10⁶ HepG2 cells were stained with 0.2ug CLINT1 antibody (10470-1-AP, red) and control antibody (blue). Fixed with 90% MeOH blocked with 3% BSA (30 min). Alexa Fluor 488-conjugated AffiniPure Goat Anti-Rabbit IgG(H+L) with dilution 1:1000.

IP Result of anti-CLINT1 (IP:10470-1-AP, 4ug; Detection:10470-1-AP 1:1000) with HeLa cells lysate 2800ug.