

## TPPII Polyclonal Antibody

Catalog number: 14120-1-AP

Size: 45 µg/150 µl

Source: Rabbit

Isotype: IgG

Synonyms:

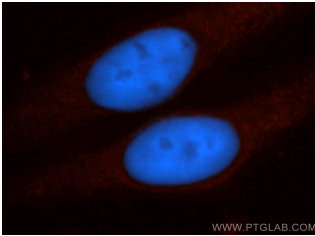
TPP2; FLJ40359, TPP 2, TPP II,

TPP2, TPPII, Tripeptidyl

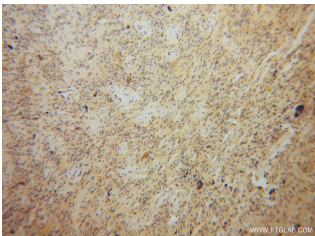
aminopeptidase, Tripeptidyl

peptidase 2, Tripeptidyl

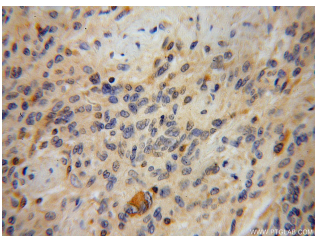
peptidase II



Immunofluorescent analysis of HepG2 cells, using TPP2 antibody 14120-1-AP at 1:50 dilution and Rhodamine-labeled goat anti-rabbit IgG (red). Blue pseudocolor = DAPI (fluorescent DNA dye).



Immunohistochemical of paraffin-embedded human gliomas using 14120-1-AP (TPP2 antibody) at dilution of 1:100 (under 10x lens)



Immunohistochemical of paraffin-embedded human gliomas using 14120-1-AP (TPP2 antibody) at dilution of 1:100 (under 40x lens)

### Background

TPPII (Tripeptidyl-peptidase 2) is an evolutionary conserved serine peptidase of the subtilisin family that removes tripeptides from the free NH<sub>2</sub> terminus of oligopeptides. The 138-kDa TPP2 polypeptide forms large oligomeric complexes of >1,000 kDa that are detected in the cytoplasm of all cell types. In addition, a membrane associated TPP 2 isoform is present in most cells (PMID:15735022).

### Applications

Tested applications:	ELISA, WB, IHC, IF, FC, IP
Cited applications:	IF
Species specificity:	Human, Mouse; other species not tested.
Cited species:	Human
Calculated TPPII MW:	1249aa, 138 kDa
Observed TPPII MW:	135-140 kDa
Positive WB detected in:	Jurkat cells, K-562 cells
Positive IP detected in:	Jurkat cells
Positive IHC detected in:	Human gliomas tissue
Positive IF detected in:	HepG2 cells
Positive FC detected in:	HepG2 cells
Recommended dilution:	WB: 1:500-1:5000
	IP: 1:200-1:2000
	IHC: 1:20-1:200
	IF: 1:20-1:200
	FC: N/A

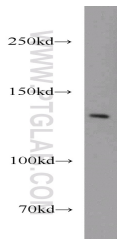
Application key: WB = Western blotting, IHC = Immunohistochemistry, IF = Immunofluorescence, IP = Immunoprecipitation

### Immunogen information

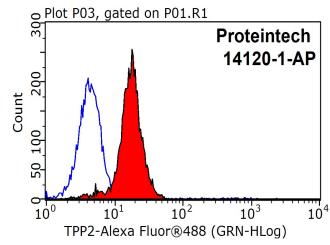
Immunogen:	Ag5296
GenBank accession number:	BC039905
Gene ID (NCBI):	7174
Full name:	Tripeptidyl peptidase II

### Product information

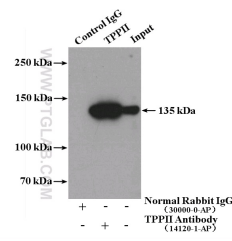
Purification method:	Antigen affinity purification
Storage:	PBS with 0.02% sodium azide and 50% glycerol pH 7.3. Store at -20°C.



Jurkat cells were subjected to SDS PAGE followed by western blot with 14120-1-AP (TPP2 antibody) at dilution of 1:1000



1X10<sup>6</sup> HepG2 cells were stained with 0.2ug TPP2 antibody (14120-1-AP, red) and control antibody (blue). Fixed with 90% MeOH blocked with 3% BSA (30 min). Alexa Fluor 488-conjugated AffiniPure Goat Anti-Rabbit IgG(H+L) with dilution 1:1500.



IP Result of anti-TPP2 (IP:14120-1-AP, 4ug; Detection:66017-1-Ig, 1:500) with Jurkat cells lysate 2400ug.