

SIGLEC9 Polyclonal Antibody

Catalog number: 13377-1-AP

Size: 54 µg/150 µl

Source: Rabbit

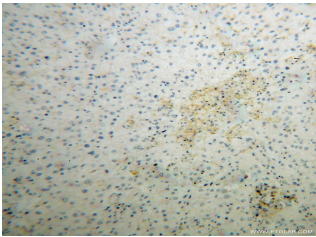
Isotype: IgG

Synonyms:

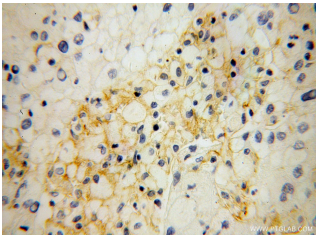
SIGLEC9; CD329, CDw329,

OBBP LIKE, Protein FOAP 9,

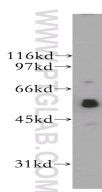
Siglec 9, SIGLEC9



Immunohistochemical of paraffin-embedded human liver cancer using 13377-1-AP (SIGLEC9 antibody) at dilution of 1:100 (under 10x lens)



Immunohistochemical of paraffin-embedded human liver cancer using 13377-1-AP (SIGLEC9 antibody) at dilution of 1:100 (under 40x lens)



A375 cells were subjected to SDS PAGE followed by western blot with 13377-1-AP (SIGLEC9 antibody) at dilution of 1:400

Applications

| | |
|---------------------------------|-------------------------------------------------------|
| Tested applications: | ELISA, WB, IHC |
| Species specificity: | Human, Mouse; other species not tested. |
| Calculated SIGLEC9 MW: | 463aa, 50 kDa |
| Observed SIGLEC9 MW: | 55-60kd |
| Positive WB detected in | A375 cells, mouse skeletal muscle tissue, U-937 cells |
| Positive IHC detected in | Human liver cancer tissue |
| Recommended dilution: | WB: 1:500-1:5000 IHC: 1:20-1:200 |

Application key: WB = Western blotting, IHC = Immunohistochemistry, IF = Immunofluorescence, IP = Immunoprecipitation

Immunogen information

| | |
|----------------------------------|--------------------------------------|
| Immunogen: | Ag4201 |
| GenBank accession number: | BC035365 |
| Gene ID (NCBI): | 27180 |
| Full name: | Sialic acid binding Ig-like lectin 9 |

Product information

| | |
|-----------------------------|----------------------------------------------------------------------|
| Purification method: | Antigen affinity purification |
| Storage: | PBS with 0.02% sodium azide and 50% glycerol pH 7.3. Store at -20°C. |