

## CCPG1 Polyclonal Antibody

Catalog number: 13861-1-AP

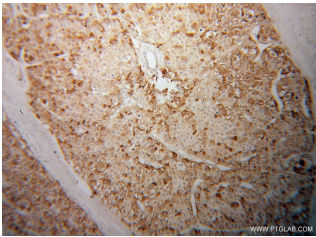
Size: 40 µg/150 µl

Source: Rabbit

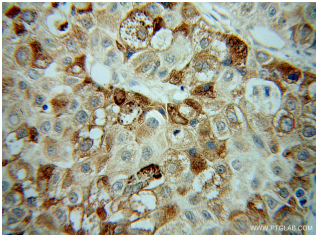
Isotype: IgG

Synonyms:

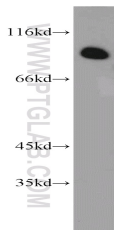
CCPG1; CCP8, CCPG1, cell cycle progression 1, CPR8, KIAA1254



Immunohistochemical of paraffin-embedded human liver cancer using 13861-1-AP (CCPG1 antibody) at dilution of 1:50 (under 10x lens)



Immunohistochemical of paraffin-embedded human liver cancer using 13861-1-AP (CCPG1 antibody) at dilution of 1:50 (under 40x lens)



mouse lung tissue were subjected to SDS PAGE followed by western blot with 13861-1-AP (CCPG1 antibody) at dilution of 1:800

### Applications

Tested applications:	ELISA, WB, IHC, IP
Species specificity:	Human, Mouse, Rat; other species not tested.
Calculated CCPG1 MW:	87kd
Observed CCPG1 MW:	87kd
Positive WB detected in	Mouse lung tissue
Positive IP detected in	Mouse brain tissue
Positive IHC detected in	Human liver cancer tissue
Recommended dilution:	WB: 1:200-1:2000
	IP: 1:200-1:2000
	IHC: 1:20-1:200

Application key: WB = Western blotting, IHC = Immunohistochemistry, IF = Immunofluorescence, IP = Immunoprecipitation

### Immunogen information

Immunogen:	Ag4841
GenBank accession number:	BC034914
Gene ID (NCBI):	9236
Full name:	Cell cycle progression 1

### Product information

Purification method:	Antigen affinity purification
Storage:	PBS with 0.02% sodium azide and 50% glycerol pH 7.3. Store at -20°C.