

RUVBL1 Polyclonal Antibody

Catalog number: 10210-2-AP

Size: 20 µg/150 µl

Source: Rabbit

Isotype: IgG

Synonyms:

RUVBL1; 49 kDa TBP

interacting protein, ECP 54,

ECP54, INO80 complex subunit

H, INO80H, Nuclear matrix

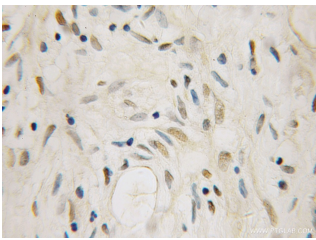
protein 238, PONTIN, Pontin

52, Pontin52, RuvB like 1, RuvB

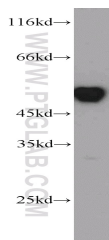
like 1 (E. coli), RUVBL1, RVB1,

TAP54 alpha, TIH1, TIP49,

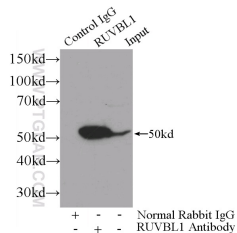
TIP49A



Immunohistochemical of paraffin-embedded human ovary tumor using 10210-2-AP (RUVBL1 antibody) at dilution of 1:50 (under 10x lens)



HEK-293 cells were subjected to SDS PAGE followed by western blot with 10210-2-AP (RUVBL1 antibody) at dilution of 1:1000



IP Result of anti-RUVBL1 (IP:10210-2-AP, 3µg; Detection:10210-2-AP 1:1000) with HeLa cells lysate 800µg.

Background

RUVBL1 is a member of the AAA (ATPase associated with diverse cellular activities) family of proteins that is associated with several chromatin-remodelling complexes and has important roles in transcriptional regulation, the DNA damage response, telomerase activity, snoRNP assembly, cellular transformation and cancer metastasis [PMID: 21617703]. It consists of 456 amino acids (50 kDa) and interacts with TATA-binding protein (TBP), which is a central component for transcriptional regulation by forming complexes with various transcription regulators. RUVBL1 is a component of a large nuclear protein complex, possibly the RNA polymerase II holoenzyme. RUVBL1 is also highly homologous to RuvB proteins that function as a DNA helicase to promote branch migration of the Holliday junction [PMID: 9588198]. This antibody is a rabbit polyclonal antibody to human RUVBL1.

Applications

Tested applications:	ELISA, WB, IHC, IP
Cited applications:	IF, IHC, pull-down, WB
Species specificity:	Human, Mouse, Rat; other species not tested.
Cited species:	Human, mouse
Calculated RUVBL1 MW:	456aa, 50 kDa
Observed RUVBL1 MW:	50kd
Positive WB detected in	HEK-293 cells, HeLa cells, HT-1080 cells, K-562 cells, mouse heart tissue, NIH/3T3 cells, rat testis tissue
Positive IP detected in	HeLa cells
Positive IHC detected in	Human ovary tumor tissue
Recommended dilution:	WB: 1:500-1:5000 IP: 1:500-1:5000 IHC: 1:20-1:200

Application key: WB = Western blotting, IHC = Immunohistochemistry, IF = Immunofluorescence, IP = Immunoprecipitation

Immunogen information

Immunogen:	Ag0281
GenBank accession number:	BC002993
Gene ID (NCBI):	8607
Full name:	RuvB-like 1 (E. coli)

Product information

Purification method:	Antigen affinity purification
Storage:	PBS with 0.1% sodium azide and 50% glycerol pH 7.3. Store at -20°C.