

S100A6 Polyclonal Antibody

Catalog number: 10245-1-AP

Size: 42 µg/150 µl

Source: Rabbit

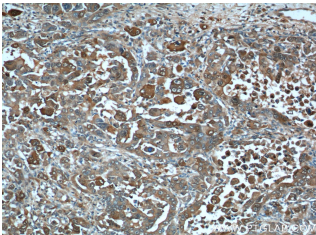
Isotype: IgG

Synonyms:

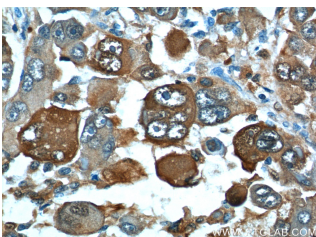
S100A6; 2A9, 5B10, CABP,
CACY, Calcyclin, MLN 4, PRA,
Protein S100 A6, S100A6



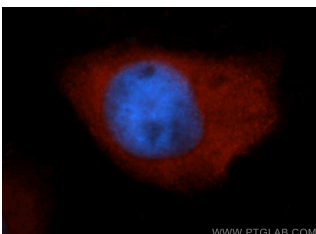
HeLa cells were subjected to SDS PAGE followed by western blot with 10245-1-AP (S100A6 antibody) at dilution of 1:800



Immunohistochemistry of paraffin-embedded human liver cancer tissue slide using 10245-1-AP (S100A6 Antibody) at dilution of 1:200 (under 10x lens).



Immunohistochemistry of paraffin-embedded human liver cancer tissue slide using 10245-1-AP (S100A6 Antibody) at dilution of 1:200 (under 40x lens).



Immunofluorescent analysis

Background

S100A6 is also named as calcyclin, prolactin receptor-associated protein (PRA), growth factor-inducible protein 2A9 or MLN4. It belongs to S100 family of low molecular weight, acidic, calcium-binding proteins which contain two EF-hand calcium binding sites. S100A6 may function as a calcium sensor to activate several processes in the calcium signal transduction pathway of cell growth, proliferation, secretion and exocytosis. The antibody is specific for S100A6.

Applications

Tested applications:	ELISA, WB, IF, FC, IP, IHC
Cited applications:	IHC, WB
Species specificity:	Human; other species not tested.
Cited species:	Human, monkey, mouse, rat
Calculated S100A6 MW:	10 kDa
Observed S100A6 MW:	10 kDa
Positive WB detected in	HeLa cells, A549 cells
Positive IP detected in	A549 cells
Positive IHC detected in	Human liver cancer tissue, human colon cancer tissue, human lung cancer tissue
Positive IF detected in	MCF-7 cells
Positive FC detected in	MCF-7 cells
Recommended dilution:	WB: 1:200-1:2000 IP: 1:500-1:5000 IHC: 1:50-1:500 IF: 1:20-1:200 FC: N/A

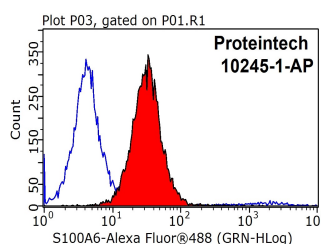
Application key: WB = Western blotting, IHC = Immunohistochemistry, IF = Immunofluorescence, IP = Immunoprecipitation

Immunogen information

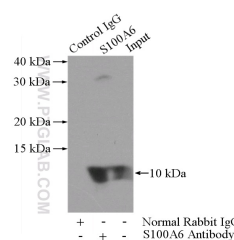
Immunogen:	Ag0385
GenBank accession number:	BC001431
Gene ID (NCBI):	6277
Full name:	S100 calcium binding protein A6

Product information

Purification method:	Antigen affinity purification
Storage:	PBS with 0.1% sodium azide and 50% glycerol pH 7.3. Store at -20°C.



1X10⁶ MCF-7 cells were



IP Result of anti-S100A6

of MCF-7 cells, using S100A6 antibody 10245-1-AP at 1:50 dilution and Rhodamine-labeled goat anti-rabbit IgG (red). Blue pseudocolor = DAPI (fluorescent DNA dye).

stained with 0.2ug S100A6 antibody (10245-1-AP, red) and control antibody (blue). Fixed with 90% MeOH blocked with 3% BSA (30 min). Alexa Fluor 488-conjugated AffiniPure Goat Anti-Rabbit IgG(H+L) with dilution 1:1000.

(IP:10245-1-AP, 3ug; Detection:10245-1-AP 1:1000) with A549 cells lysate 2800ug.