

## Alpha-2-macroglobulin Polyclonal Antibody

Catalog number: 13545-1-AP

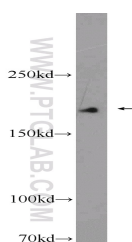
Size: 20 µg/150 µl

Source: Rabbit

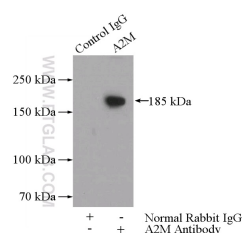
Isotype: IgG

Synonyms:

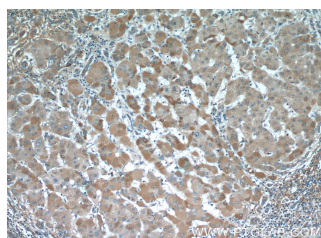
A2M; A2M, Alpha 2 M, alpha 2  
macroglobulin, CPAMD5,  
DKFZp779B086, FWP007, S863  
7, α-2M



human blood tissue were subjected to SDS PAGE followed by western blot with 13545-1-AP(A2M antibody) at dilution of 1:6000



IP Result of anti-A2M (IP:13545-1-AP, 5µg; Detection:13545-1-AP 1:300) with HepG2 cells lysate 2800µg.



Immunohistochemistry of paraffin-embedded human hepatocirrhosis tissue slide using 13545-1-AP( A2M Antibody) at dilution of 1:50 (under 10x lens)

### Background

Alpha-2-macroglobulin, also known as α2-macroglobulin (α2M or A2M), is a protein abundant in the plasma of vertebrates and several invertebrates. A2M is an evolutionarily conserved arm of the innate immune system. It also mediates the proliferation of T cells and macrophages. A2M acts as a nonspecific protease inhibitor involved in the host defense mechanism that inactivates both endogenous and exogenous proteases, including trypsin, thrombin and collagenase. Even though A2M is produced predominantly by the liver, it may also be expressed in the reproductive tract, heart, and brain, and may have important roles in many physiological processes and medical illnesses including Alzheimer's disease.

### Applications

Tested applications:	ELISA, WB, IHC, IP, IF
Species specificity:	Human, Mouse, Rat; other species not tested.
Calculated Alpha-2-macroglobulin MW:	1474aa, 163 kDa
Observed Alpha-2-macroglobulin MW:	185 kDa
Positive WB detected in	Human blood tissue, HepG2 cells, human brain tissue, human serum tissue
Positive IP detected in	HepG2 cells
Positive IHC detected in	Human hepatocirrhosis tissue, human ovary tissue, human stomach tissue
Positive IF detected in	HepG2 cells
Recommended dilution:	WB: 1:2000-1:20000 IP: 1:200-1:1000 IHC: 1:20-1:200 IF: 1:50-1:500

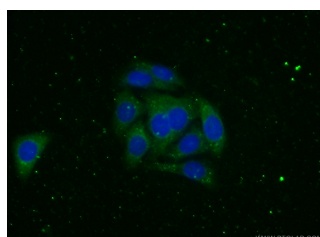
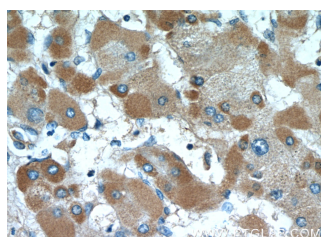
Application key: WB = Western blotting, IHC = Immunohistochemistry, IF = Immunofluorescence, IP = Immunoprecipitation

### Immunogen information

Immunogen:	Ag4489
GenBank accession number:	BC040071
Gene ID (NCBI):	2
Full name:	Alpha-2-macroglobulin

### Product information

Purification method:	Antigen affinity purification
Storage:	PBS with 0.02% sodium azide and 50% glycerol pH 7.3. Store at -20°C.



Immunohistochemistry of  
paraffin-embedded human  
hepatocirrhosis tissue slide  
using 13545-1-AP( A2M  
Antibody) at dilution of 1:50  
(under 40x lens)

Immunofluorescent analysis  
of ( -20% Ethanol ) fixed  
HepG2 cells using 13545-1-  
AP( A2M Antibody) at  
dilution of 1:100 and Alexa  
Fluor 488-conjugated  
AffiniPure Goat Anti-Rabbit  
IgG(H+L)