

RBM15 Polyclonal Antibody

Catalog number: 10587-1-AP

Size: 48 µg/150 µl

Source: Rabbit

Isotype: IgG

Synonyms:

RBM15; FLJ12479, FLJ21943,

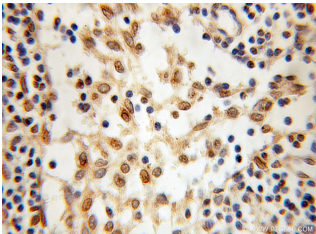
One twenty two protein 1, OTT,

OTT1, RBM15, RNA binding

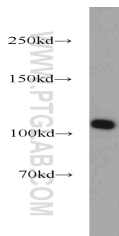
motif protein 15, SPEN



Immunofluorescent analysis of HepG2 cells, using RBM15 antibody 10587-1-AP at 1:100 dilution and FITC-labeled donkey anti-rabbit IgG(green). Blue pseudocolor = DAPI (fluorescent DNA dye).



Immunohistochemical of paraffin-embedded human breast cancer using 10587-1-AP(RBM15 antibody) at dilution of 1:100 (under 10x lens)



HEK-293 cells were subjected to SDS PAGE followed by western blot with 10587-1-AP(RBM15 antibody) at dilution of 1:1000

Background

RNA-binding motif protein 15 (RBM15) belongs to the SPEN protein family, which have repressor function in several signaling pathway, and may bind to RNA through interaction with spliceosome components. It was first described as a 5' translocation partner of the MAL gene in t(1,22)(p13;q13) infant acute megakaryocytic leukemia, and it functions in murine hematopoiesis through modulating Notch-induced transcriptional activation, which play crucial roles in leukemogenesis. Decreasing RBM15 levels with RNA interference could inhibit the growth and proliferation, block the cell cycle, and induce apoptosis in CML cells.

Applications

Tested applications:	ELISA, WB, IHC, IF
Cited applications:	IF, IP, WB
Species specificity:	Human, Mouse, Rat; other species not tested.
Cited species:	Human, mouse
Calculated RBM15 MW:	105 kDa
Observed RBM15 MW:	100-107 kDa
Positive WB detected in	HEK-293 cells, A431 cells, K-562 cells, MCF7 cells
Positive IHC detected in	Human breast cancer tissue
Positive IF detected in	HepG2 cells
Recommended dilution:	WB: 1:500-1:5000
	IHC: 1:20-1:200
	IF: 1:20-1:200

Application key: WB = Western blotting, IHC = Immunohistochemistry, IF = Immunofluorescence, IP = Immunoprecipitation

Immunogen information

Immunogen:	Ag0938
GenBank accession number:	BC006397
Gene ID (NCBI):	64783
Full name:	RNA binding motif protein 15

Product information

Purification method:	Antigen affinity purification
Storage:	PBS with 0.1% sodium azide and 50% glycerol pH 7.3. Store at -20°C.