

HE4 Polyclonal Antibody

Catalog number: 14406-1-AP

Size: 31 µg/150 µl

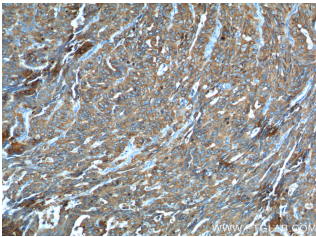
Source: Rabbit

Isotype: IgG

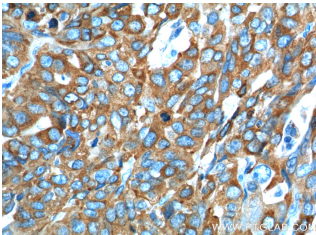
Synonyms:

WFDC2; dJ461P17.6, HE4,

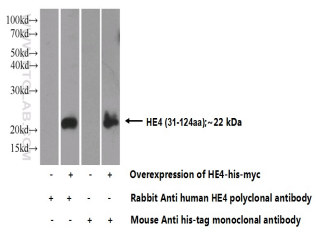
WAP5, WFDC2



Immunohistochemistry of paraffin-embedded human ovary tumor tissue slide using 14406-1-AP(HE4 Antibody) at dilution of 1:100 (under 10x lens).



Immunohistochemistry of paraffin-embedded human ovary tumor tissue slide using 14406-1-AP(HE4 Antibody) at dilution of 1:100 (under 40x lens).



Transfected HEK-293 cells were subjected to SDS PAGE followed by western blot with 14406-1-AP(HE4 Antibody) at dilution of 1:1000

Background

WFDC2, also named as HE4, is a member of the WFDC domain family. The WFDC domain, or WAP Signature motif, contains eight cysteines forming four disulfide bonds at the core of the protein, and functions as a protease inhibitor in many family members. HE4 is expressed in a number of normal tissues, and it is also highly expressed in a number of tumors cells lines, such ovarian, colon, breast, lung and renal cells lines. In some study, HE4 was referred to as a biomarker for ovarian carcinoma.

Applications

Tested applications:	ELISA, WB, IHC
Species specificity:	Human; other species not tested.
Calculated HE4 MW:	13 kDa
Observed HE4 MW:	
Positive WB detected in	Transfected HEK-293 cells
Positive IHC detected in	Human ovary tumor tissue, human testis tissue
Recommended dilution:	WB: 1:500-1:5000
	IHC: 1:50-1:500

Application key: WB = Western blotting, IHC = Immunohistochemistry, IF = Immunofluorescence, IP = Immunoprecipitation

Immunogen information

Immunogen:	Ag5684
GenBank accession number:	BC046106
Gene ID (NCBI):	10406
Full name:	WAP four-disulfide core domain 2

Product information

Purification method:	Antigen affinity purification
Storage:	PBS with 0.1% sodium azide and 50% glycerol pH 7.3. Store at -20°C.