

KEAP1 Polyclonal Antibody

Catalog number: 10503-2-AP

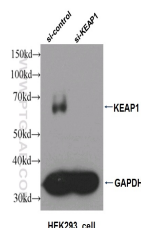
Size: 56 µg/150 µl

Source: Rabbit

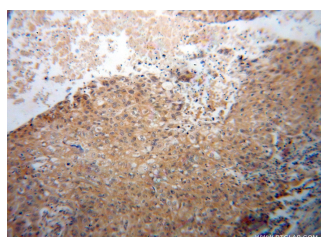
Isotype: IgG

Synonyms:

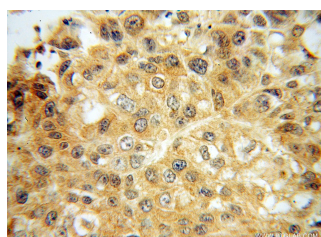
KEAP1; Cytosolic inhibitor of Nrf2, INrf2, KEAP1, Kelch like protein 19, KIAA0132, KLHL19



WB result of KEAP1 antibody (10503-2-AP, 1:2000) with si-control and si-KEAP1 transfected HEK293 cell.



Immunohistochemical of paraffin-embedded human lung cancer using 10503-2-AP(KEAP1 antibody) at dilution of 1:100 (under 10x lens)



Immunohistochemical of paraffin-embedded human lung cancer using 10503-2-AP(KEAP1 antibody) at dilution of 1:100 (under 40x lens)

Background

KEAP1, also named as INRF2, KIAA0132 and KLHL19, is part of a multiprotein complex that contains the CUL3-ROC1 ubiquitin ligase, which can ubiquitinate the N-terminal domain of NRF2[PMID: 20173742]. Two molecules of KEAP1 bind to two distinct sites in the N-terminal region of NRF2, the ETGE and DLG sites, which affect the KEAP1-NRF2 interaction and/or its physiological consequences[PMID: 22215675]. KEAP1 retains NFE2L2/NRF2 in the cytosol. It functions as substrate adapter protein for the E3 ubiquitin ligase complex formed by CUL3 and RBX1[PMID: 20427290]. It also retains BPTF in the cytosol. This antibody is a rabbit polyclonal antibody raised against residues near the C terminus of human KEAP1.

Read more about this antibody on the blog:<http://blog.ptglab.com/index.php/nsclc-research-anti-keap1-antibody-helps-uncover-targets-biomarker-potential/>

Applications

Tested applications:	ELISA, IHC, IP, WB
Cited applications:	IF, IHC, IP, WB
Species specificity:	Human, Mouse, Rat; other species not tested.
Cited species:	Human, monkey, mouse, rat
Calculated KEAP1 MW:	624aa, 70 kDa
Observed KEAP1 MW:	55-70 kDa
Positive WB detected in	HepG2 cells, HEK-293 cells, Jurkat cells, mouse kidney tissue, rat kidney tissue
Positive IP detected in	Mouse skeletal muscle tissue
Positive IHC detected in	Human lung cancer tissue, human breast cancer tissue, human skeletal muscle tissue
Recommended dilution:	WB: 1:1000-1:10000 IP: 1:200-1:2000 IHC: 1:20-1:200

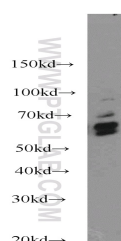
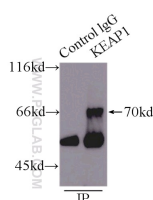
Application key: WB = Western blotting, IHC = Immunohistochemistry, IF = Immunofluorescence, IP = Immunoprecipitation

Immunogen information

Immunogen:	Ag0779
GenBank accession number:	BC002930
Gene ID (NCBI):	9817
Full name:	Kelch-like ECH-associated protein 1

Product information

Purification method:	Antigen affinity purification
Storage:	PBS with 0.1% sodium azide and 50% glycerol pH 7.3. Store at -20°C.



IP Result of anti-KEAP1
(IP:10503-2-AP, 5ug;
Detection:10503-2-AP 1:600)
with mouse skeletal muscle
tissue lysate 8000ug.

HepG2 cells were subjected to
SDS PAGE followed by
western blot with 10503-2-
AP(KEAP1 antibody) at
dilution of 1:2000