

VAMP1 Polyclonal Antibody

Catalog number: 13115-1-AP

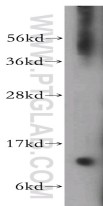
Size: 32 µg/150 µl

Source: Rabbit

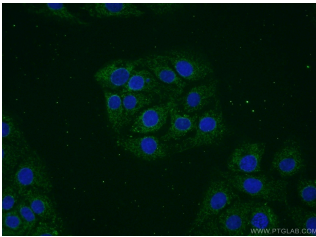
Isotype: IgG

Synonyms:

VAMP1; DKFZp686H12131,
SYB1, Synaptobrevin 1, VAMP
1, VAMP1



human brain tissue were subjected to SDS PAGE followed by western blot with 13115-1-AP(VAMP1 antibody) at dilution of 1:500



Immunofluorescent analysis of SH-SY5Y cells using 13115-1-AP(VAMP1 Antibody) at dilution of 1:50 and Alexa Fluor 488-conjugated AffiniPure Goat Anti-Rabbit IgG(H+L)

Background

VAMP1, also named as synaptobrevin 1, is a member of the vesicle-associated membrane protein (VAMP)/synaptobrevin family. VAMP1 is a part of the SNARE (soluble NSF-attachment protein receptor) complex. Characterized by a common sequence called the SNARE motif, SNARE proteins are involved in membrane fusion and vesicular transport (PMID: 11252968). VAMP1 is involved in synaptic vesicle exocytosis, a fundamental step in neurotransmitter release.

Applications

Tested applications:	ELISA, WB, IF
Species specificity:	Human, Mouse, Rat; other species not tested.
Calculated VAMP1 MW:	117aa, 13 kDa
Observed VAMP1 MW:	13 kDa
Positive WB detected in	Human brain tissue
Positive IF detected in	SH-SY5Y cells
Recommended dilution:	WB: 1:500-1:5000 IF: 1:20-1:200

Application key: WB = Western blotting, IHC = Immunohistochemistry, IF = Immunofluorescence, IP = Immunoprecipitation

Immunogen information

Immunogen:	Ag3787
GenBank accession number:	BC023286
Gene ID (NCBI):	6843
Full name:	Vesicle-associated membrane protein 1 (synaptobrevin 1)

Product information

Purification method:	Antigen affinity purification
Storage:	PBS with 0.1% sodium azide and 50% glycerol pH 7.3. Store at -20°C.