

## TRAP1 Polyclonal Antibody

Catalog number: 10325-1-AP

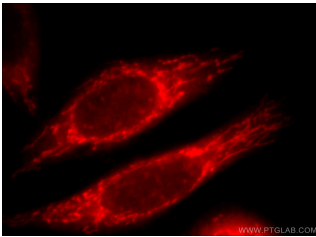
Size: 26 µg/150 µl

Source: Rabbit

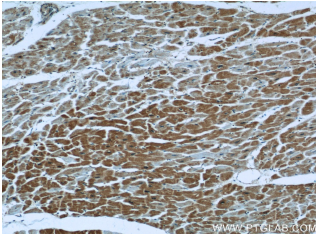
Isotype: IgG

Synonyms:

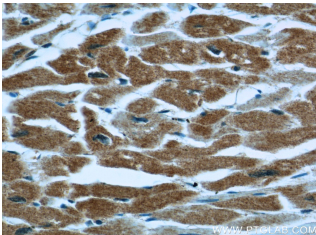
TRAP1; HSP 75, HSP75,  
HSP90L, TNFR associated  
protein 1, TRAP 1, TRAP1



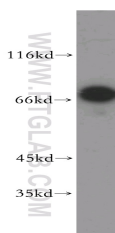
Immunofluorescent analysis of HeLa cells, using TRAP1 antibody 10325-1-AP at 1:25 dilution and Rhodamine-labeled goat anti-rabbit IgG (red).



Immunohistochemical of paraffin-embedded human heart using 10325-1-AP (TRAP1 antibody) at dilution of 1:50 (under 10x lens)



Immunohistochemical of paraffin-embedded human heart using 10325-1-AP (TRAP1 antibody) at dilution of 1:50 (under 40x lens)



Raji cells were subjected to SDS PAGE followed by

### Background

TNF receptor-associated protein 1 (TRAP1, synonym: HSP75) is a member of the hsp90 family of molecular chaperones, and is expressed ubiquitously and located to mitochondria. A unique LxCxE motif in hsp75, but not in other hsp90 family members, appears to be important for binding to the simian virus 40 T-antigen-binding domain of hypophosphorylated Rb. Data also suggests that suppression of the expression of TRAP1 in mitochondria plays an important role in the induction of apoptosis caused via formation of reactive oxygen species (ROS).

### Applications

Tested applications:	ELISA, WB, IHC, IF, FC
Species specificity:	Human, Mouse, Rat; other species not tested.
Calculated TRAP1 MW:	80 kDa
Observed TRAP1 MW:	66-70 kDa, 60 kDa
Positive WB detected in	Raji cells, HeLa cells, HepG2 cells, HL-60 cells, K-562 cells, mouse heart tissue, NIH/3T3 cells
Positive IHC detected in	Human heart tissue
Positive IF detected in	HeLa cells
Positive FC detected in	HeLa cells
Recommended dilution:	WB: 1:500-1:5000 IHC: 1:20-1:200 IF: 1:10-1:100 FC: N/A

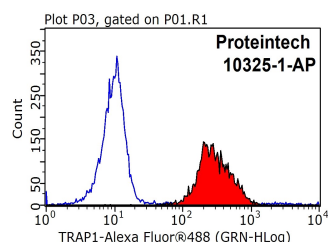
Application key: WB = Western blotting, IHC = Immunohistochemistry, IF = Immunofluorescence, IP = Immunoprecipitation

### Immunogen information

Immunogen:	Ag0400
GenBank accession number:	BC000406
Gene ID (NCBI):	10131
Full name:	TNF receptor-associated protein 1

### Product information

Purification method:	Antigen affinity purification
Storage:	PBS with 0.1% sodium azide and 50% glycerol pH 7.3. Store at -20°C.



1X10<sup>6</sup> HeLa cells were stained with 0.2 µg TRAP1

**western blot with 10325-1-  
AP(TRAP1 antibody) at  
dilution of 1:500**

**antibody (10325-1-AP, red)  
and control antibody (blue).  
Fixed with 90% MeOH  
blocked with 3% BSA (30  
min). Alexa Fluor 488-  
conjugated AffiniPure Goat  
Anti-Rabbit IgG(H+L) with  
dilution 1:1000.**