

AP4M1 Polyclonal Antibody

Catalog number: 11653-1-AP

Size: 20 µg/150 µl

Source: Rabbit

Isotype: IgG

Synonyms:

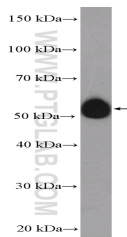
AP4M1; AP 4 complex subunit

mu 1, AP4M1, MU 4, Mu

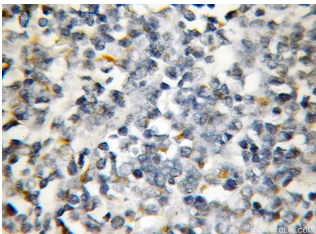
adaptin related protein 2, MU

ARP2, Mu subunit of AP 4,

mu4, Mu4 adaptin, MUARP2



mouse heart tissue were subjected to SDS PAGE followed by western blot with 11653-1-AP(AP4M1 Antibody) at dilution of 1:600



Immunohistochemical of paraffin-embedded human lymphoma using 11653-1-AP(AP4M1 antibody) at dilution of 1:50 (under 10x lens)

Applications

Tested applications:	ELISA, IHC, WB
Species specificity:	Human,Mouse,Rat; other species not tested.
Calculated AP4M1 MW:	453aa,50 kDa
Observed AP4M1 MW:	50-55 kDa
Positive WB detected in	Mouse heart tissue, A431 cells, HeLa cells, human heart tissue, human lung tissue, mouse lung tissue
Positive IHC detected in	Human lymphoma tissue
Recommended dilution:	WB: 1:200-1:2000 IHC: 1:20-1:200

Application key: WB = Western blotting, IHC = Immunohistochemistry, IF = Immunofluorescence, IP = Immunoprecipitation

Immunogen information

Immunogen:	Ag2222
GenBank accession number:	BC018705
Gene ID (NCBI):	9179
Full name:	Adaptor-related protein complex 4, mu 1 subunit

Product information

Purification method:	Antigen affinity purification
Storage:	PBS with 0.1% sodium azide and 50% glycerol pH 7.3. Store at -20°C.