

HLF Polyclonal Antibody

Catalog number: 12870-1-AP

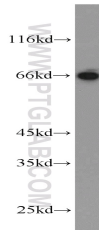
Size: 36 µg/150 µl

Source: Rabbit

Isotype: IgG

Synonyms:

HLF; MGC33822



mouse liver tissue were subjected to SDS PAGE followed by western blot with 12870-1-AP(HLF Antibody) at dilution of 1:800

Applications

Tested applications:	ELISA, WB
Species specificity:	Human, mouse, rat; other species not tested.
Positive WB detected in:	Mouse liver tissue, HEK-293 cells, HepG2 cells, K-562 cells, mouse brain tissue
Calculated HLF MW:	295aa,33kd
Observed HLF MW:	66kd
Recommended dilution:	WB: 1:200-1:2000

Application key: WB = Western blotting, IHC = Immunohistochemistry, IF = Immunofluorescence, IP = Immunoprecipitation, FC = Flow cytometry

Immunogen information

Immunogen:	Ag3533
GenBank accession number:	BC036093
Gene ID (NCBI):	3131
Full name:	Hepatic leukemia factor

Product information

Purification method:	Antigen affinity purification
Storage:	PBS with 0.1% sodium azide and 50% glycerol pH 7.3. Store at -20°C.