

UBLCP1 Polyclonal Antibody

Catalog number: 12099-1-AP

Size: 50 µg/150 µl

Source: Rabbit

Isotype: IgG

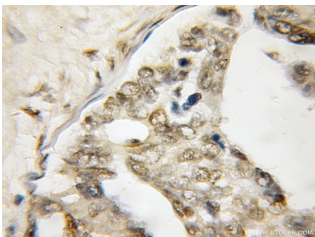
Synonyms:

UBLCP1; CPUB1, FLJ25267,

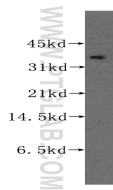
UBLCP1



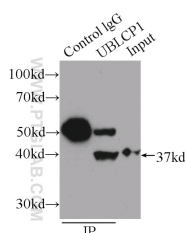
Immunofluorescent analysis of HeLa cells, using UBLCP1 antibody 12099-1-AP at 1:50 dilution and FITC-labeled donkey anti-rabbit IgG (green). Blue pseudocolor = DAPI (fluorescent DNA dye).



Immunohistochemical of paraffin-embedded human ovary tumor using 12099-1-AP(UBLCP1 antibody) at dilution of 1:50 (under 10x lens)



K-562 cells were subjected to SDS PAGE followed by western blot with 12099-1-AP(UBLCP1 antibody) at dilution of 1:500



IP Result of anti-UBLCP1

(IP:12099-1-AP, 3µg;

Applications

Tested applications:	ELISA, WB, IHC, IF, IP
Species specificity:	Human, Mouse, Rat; other species not tested.
Calculated UBLCP1 MW:	318aa, 37 kDa
Observed UBLCP1 MW:	37 kDa
Positive WB detected in	K-562 cells, human brain tissue
Positive IP detected in	K-562 cells
Positive IHC detected in	Human ovary tumor tissue
Positive IF detected in	Hela cells
Recommended dilution:	WB: 1:500-1:5000
	IP: 1:200-1:2000
	IHC: 1:20-1:200
	IF: 1:20-1:200

Application key: WB = Western blotting, IHC = Immunohistochemistry, IF = Immunofluorescence, IP = Immunoprecipitation

Immunogen information

Immunogen:	Ag2743
GenBank accession number:	BC013425
Gene ID (NCBI):	134510
Full name:	Ubiquitin-like domain containing CTD phosphatase 1

Product information

Purification method:	Antigen affinity purification
Storage:	PBS with 0.1% sodium azide and 50% glycerol pH 7.3. Store at -20°C.

Detection:12099-1-AP 1:500)
with K-562 cells lysate 1760ug.