

CAMP Polyclonal Antibody

Catalog number: 12009-1-AP

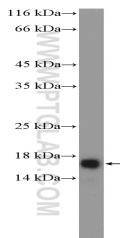
Size: 33 µg/150 µl

Source: Rabbit

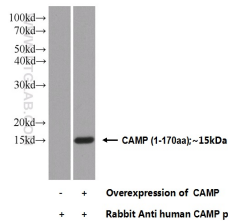
Isotype: IgG

Synonyms:

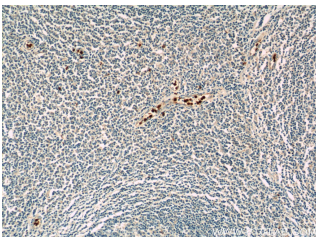
CAMP; CAMP, CAP 18, CAP18, CRAMP, FALL 39, FALL39, hCAP 18, HSD26, LL37



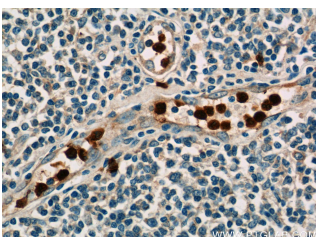
mouse spleen tissue were subjected to SDS PAGE followed by western blot with 12009-1-AP(CAMP Antibody) at dilution of 1:300



Transfected HEK-293 cells were subjected to SDS PAGE followed by western blot with 12009-1-AP(CAMP Antibody) at dilution of 1:300



Immunohistochemistry of paraffin-embedded human tonsillitis tissue slide using 12009-1-AP(CAMP Antibody) at dilution of 1:50 (under 10x lens)



Immunohistochemistry of paraffin-embedded human

Applications

Tested applications:	ELISA, IHC, WB
Species specificity:	Human, Mouse; other species not tested.
Calculated CAMP MW:	170aa,19 kDa
Observed CAMP MW:	15 kDa
Positive WB detected in	Mouse spleen tissue, Transfected HEK-293 cells
Positive IHC detected in	Human tonsillitis tissue, human spleen tissue
Recommended dilution:	WB: 1:200-1:1000 IHC: 1:20-1:200

Application key: WB = Western blotting, IHC = Immunohistochemistry, IF = Immunofluorescence, IP = Immunoprecipitation

Immunogen information

Immunogen:	Ag2622
GenBank accession number:	BC055089
Gene ID (NCBI):	820
Full name:	Cathelicidin antimicrobial peptide

Product information

Purification method:	Antigen affinity purification
Storage:	PBS with 0.1% sodium azide and 50% glycerol pH 7.3. Store at -20°C.

tonsillitis tissue slide using
12009-1-AP(CAMP Antibody)
at dilution of 1:50 (under 40x
lens)