

RAB10 PolyAb Antibody

Catalog number: 11808-1-AP

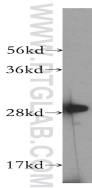
Size: 20 µg/150 µl

Source: Rabbit

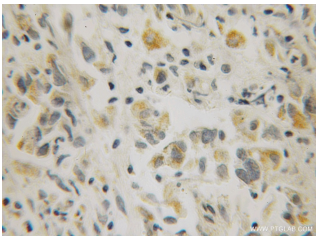
Isotype: IgG

Synonyms:

RAB10;



human brain tissue were subjected to SDS PAGE followed by western blot with 11808-1-AP(RAB10 Antibody) at dilution of 1:1000



Immunohistochemistry of paraffin-embedded human prostate cancer using 11808-1-AP(RAB10 Antibody) at Dilution 1:100 (under 10x lens)

Background

RAB10 belongs to the RAS superfamily of small GTPases. RAB10 localizes to a system of tubules and vesicles, and it may be involved in vesicular trafficking and neurotransmitter release. It is also associated with Glut4 translocation in adipocytes.

Applications

Tested applications:	ELISA, WB, IHC
Cited applications:	IF, IHC, WB
Species specificity:	Human, Mouse, Rat; other species not tested.
Cited species:	Human, mouse, rat, zebrafish
Positive WB detected in:	Human brain tissue, human brain tissue, mouse brain tissue, mouse skeletal muscle tissue, rat brain tissue
Calculated RAB10 MW:	200aa, 23kd
Observed RAB10 MW:	29 kDa
Positive IHC detected in:	Human prostate cancer
Recommended dilution:	WB: 1:500-1:5000 IHC: 1:50-1:200

Application key: WB = Western blotting, IHC = Immunohistochemistry, IF = Immunofluorescence, IP = Immunoprecipitation, FC = Flow cytometry

Immunogen information

Immunogen:	Ag2473
GenBank accession number:	BC000896
Gene ID (NCBI):	10890
Full name:	RAB10, member RAS oncogene family

Product information

Purification method:	Antigen affinity purification
Storage:	PBS with 0.1% sodium azide and 50% glycerol pH 7.3. Store at -20°C.