

DPF2 Polyclonal Antibody

Catalog number: 12111-1-AP

Size: 24 µg/150 µl

Source: Rabbit

Isotype: IgG

Synonyms:

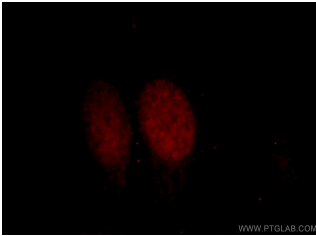
DPF2; BAF45D, BRG1

associated factor 45D, DPF2,

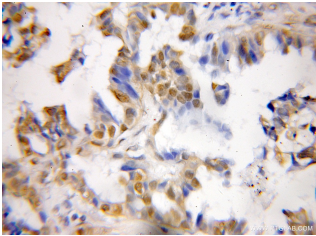
Protein requiem, REQ, ubi d4,

UBID4, Zinc finger protein ubi

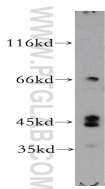
d4



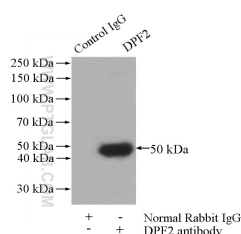
Immunofluorescent analysis of HepG2 cells, using DPF2 antibody 12111-1-AP at 1:25 dilution and Rhodamine-labeled goat anti-rabbit IgG (red).



Immunohistochemical of paraffin-embedded human lung cancer using 12111-1-AP(DPF2 antibody) at dilution of 1:50 (under 10x lens)



Apoptosised HeLa cells were subjected to SDS PAGE followed by western blot with 12111-1-AP(DPF2 antibody) at dilution of 1:300



Applications

Tested applications:	ELISA, WB, IHC, IF, IP
Species specificity:	Human, Mouse, Rat; other species not tested.
Calculated DPF2 MW:	391aa, 44 kDa
Observed DPF2 MW:	44-50 kDa
Positive WB detected in	Apoptosised HeLa cells, Jurkat cells, K-562 cells, Y79 cells
Positive IP detected in	Jurkat cells
Positive IHC detected in	Human lung cancer tissue, human testis tissue
Positive IF detected in	HepG2 cells, Hela cells
Recommended dilution:	WB: 1:200-1:2000 IP: 1:200-1:2000 IHC: 1:20-1:200 IF: 1:10-1:100

Application key: WB = Western blotting, IHC = Immunohistochemistry, IF = Immunofluorescence, IP = Immunoprecipitation

Immunogen information

Immunogen:	Ag2756
GenBank accession number:	BC014889
Gene ID (NCBI):	5977
Full name:	D4, zinc and double PHD fingers family 2

Product information

Purification method:	Antigen affinity purification
Storage:	PBS with 0.02% sodium azide and 50% glycerol pH 7.3. Store at -20°C.

**IP Result of anti-DPF2
(IP:12111-1-AP, 4ug;
Detection:12111-1-AP 1:500)
with Jurkat cells lysate
1200ug.**