

MCFD2 Polyclonal Antibody

Catalog number: 13068-1-AP

Size: 27 µg/150 µl

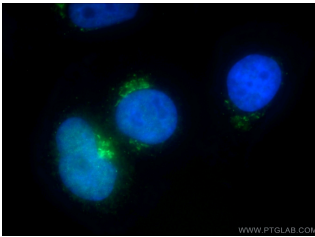
Source: Rabbit

Isotype: IgG

Synonyms:

MCFD2; LMAN1IP, MCFD2,

SDNSF



Immunofluorescent analysis of HepG2 cells using 13068-1-AP (MCFD2 Antibody) at dilution of 1:50 and Alexa Fluor 488-conjugated AffiniPure Goat Anti-Rabbit IgG(H+L)

Applications

Tested applications:	ELISA, IF
Species specificity:	Human, Mouse, Rat; other species not tested.
Calculated MCFD2 MW:	146aa, 16 kDa
Observed MCFD2 MW:	
Positive IF detected in:	HepG2 cells, HeLa cells
Recommended dilution:	IF: 1:20-1:200

Application key: WB = Western blotting, IHC = Immunohistochemistry, IF = Immunofluorescence, IP = Immunoprecipitation

Immunogen information

Immunogen:	Ag3768
GenBank accession number:	BC040357
Gene ID (NCBI):	90411
Full name:	Multiple coagulation factor deficiency 2

Product information

Purification method:	Antigen affinity purification
Storage:	PBS with 0.1% sodium azide and 50% glycerol pH 7.3. Store at -20°C.