

RALB Polyclonal Antibody

Catalog number: 12340-1-AP

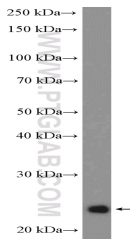
Size: 32 µg/150 µl

Source: Rabbit

Isotype: IgG

Synonyms:

RALB; RALB, Ras related
protein Ral B



Y79 cells were subjected to SDS
PAGE followed by western blot with
12340-1-AP(RALB Antibody) at
dilution of 1:600

Applications

Tested applications:	ELISA, WB
Cited applications:	IHC
Species specificity:	Human, Mouse; other species not tested.
Cited species:	Drosophila
Calculated RALB MW:	206aa,23 kDa
Observed RALB MW:	23 kDa
Positive WB detected in	Y79 cells, human brain tissue, human lung tissue, mouse brain tissue, mouse lung tissue
Recommended dilution:	WB: 1:200-1:2000

Application key: WB = Western blotting, IHC = Immunohistochemistry, IF = Immunofluorescence, IP = Immunoprecipitation

Immunogen information

Immunogen:	Ag2992
GenBank accession number:	BC018163
Gene ID (NCBI):	5899
Full name:	V-ral simian leukemia viral oncogene homolog B (ras related; GTP binding protein)

Product information

Purification method:	Antigen affinity purification
Storage:	PBS with 0.1% sodium azide and 50% glycerol pH 7.3. Store at -20°C.