

MLF1 Polyclonal Antibody

Catalog number: 13100-1-AP

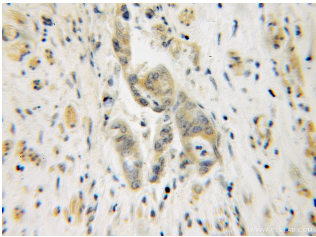
Size: 79 µg/150 µl

Source: Rabbit

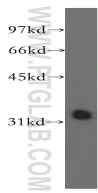
Isotype: IgG

Synonyms:

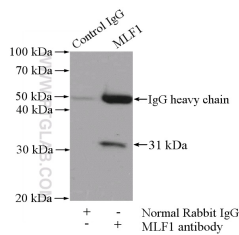
MLF1; MLF1, myeloid leukemia factor 1



Immunohistochemical of paraffin-embedded human colon cancer using 13100-1-AP (MLF1 antibody) at dilution of 1:100 (under 10x lens)



mouse heart tissue were subjected to SDS PAGE followed by western blot with 13100-1-AP (MLF1 antibody) at dilution of 1:500



IP Result of anti-MLF1 (IP:13100-1-AP, 4µg; Detection:13100-1-AP 1:500) with mouse heart tissue lysate 4000µg.

Applications

Tested applications:	ELISA, WB, IHC, IP
Species specificity:	Human, Mouse; other species not tested.
Calculated MLF1 MW:	268aa, 31 kDa
Observed MLF1 MW:	31 kDa
Positive WB detected in	Mouse heart tissue, human brain tissue
Positive IP detected in	Mouse heart tissue
Positive IHC detected in	Human colon cancer tissue
Recommended dilution:	WB: 1:500-1:5000
	IP: 1:200-1:2000
	IHC: 1:20-1:200

Application key: WB = Western blotting, IHC = Immunohistochemistry, IF = Immunofluorescence, IP = Immunoprecipitation

Immunogen information

Immunogen:	Ag3727
GenBank accession number:	BC007045
Gene ID (NCBI):	4291
Full name:	Myeloid leukemia factor 1

Product information

Purification method:	Antigen affinity purification
Storage:	PBS with 0.1% sodium azide and 50% glycerol pH 7.3. Store at -20°C.