

CDK2 Polyclonal Antibody

Catalog number: 10122-1-AP

Size: 46 µg/150 µl

Source: Rabbit

Isotype: IgG

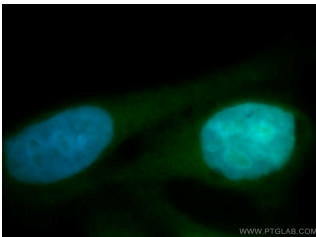
Synonyms:

CDK2; CDK2, Cell division

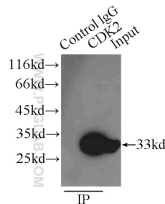
protein kinase 2, cyclin

dependent kinase 2, p33

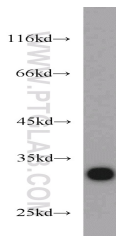
protein kinase, p33(CDK2)



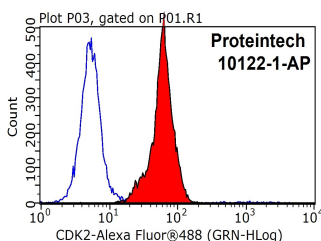
Immunofluorescent analysis of HepG2 cells, using CDK2 antibody 10122-1-AP at 1:100 dilution and FITC-labeled donkey anti-rabbit IgG (green). Blue pseudocolor = DAPI (fluorescent DNA dye).



IP Result of anti-CDK2 (IP:10122-1-AP, 3µg; Detection:10122-1-AP 1:1500) with HeLa cells lysate 4650µg.



K-562 cells were subjected to SDS PAGE followed by western blot with 10122-1-AP (CDK2 antibody) at dilution of 1:600



1X10⁶ HepG2 cells were

Background

CDK2(Cyclin-dependent kinase 2) is also named as CDKN2 and belongs to the protein kinase superfamily, CMGC Ser/Thr protein kinase family, CDC2/CDKX subfamily. It is involved in the control of the cell cycle; essential for meiosis, but dispensable for mitosis. It has 2 isoforms produced by alternative splicing.

Applications

Tested applications:	ELISA, WB, IF, IP, FC
Cited applications:	WB
Species specificity:	Human, Mouse, Rat; other species not tested.
Cited species:	Human
Calculated CDK2 MW:	33 kDa
Observed CDK2 MW:	33 kDa
Positive WB detected in	K-562 cells, A431 cells, HEK-293 cells, HeLa cells, HL-60 cells, Jurkat cells, MCF7 cells, NIH/3T3 cells, rat kidney tissue
Positive IP detected in	HeLa cells
Positive IF detected in	HepG2 cells
Positive FC detected in	HepG2 cells
Recommended dilution:	WB: 1:200-1:2000
	IP: 1:500-1:5000
	IF: 1:20-1:200
	FC: N/A

Application key: WB = Western blotting, IHC = Immunohistochemistry, IF = Immunofluorescence, IP = Immunoprecipitation

Immunogen information

Immunogen:	Ag0166
GenBank accession number:	BC003065
Gene ID (NCBI):	1017
Full name:	Cyclin-dependent kinase 2

Product information

Purification method:	Antigen affinity purification
Storage:	PBS with 0.1% sodium azide and 50% glycerol pH 7.3. Store at -20°C.

stained with 0.2ug CDK2
antibody (10122-1-AP, red)
and control antibody (blue).
Fixed with 90% MeOH
blocked with 3% BSA (30
min). Alexa Fluor 488-
conjugated AffiniPure Goat
Anti-Rabbit IgG(H+L) with
dilution 1:1000.