

RPLP0 Polyclonal Antibody

Catalog number: 11290-2-AP

Size: 20 µg/150 µl

Source: Rabbit

Isotype: IgG

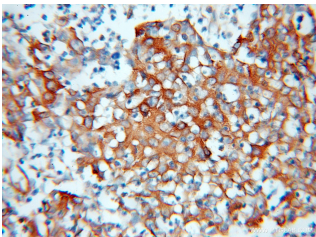
Synonyms:

RPLP0; 60S ribosomal protein

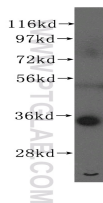
L10E, L10E, P0, PRLP0,

ribosomal protein, large, P0,

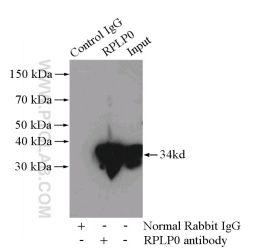
RPLP0, RPP0



Immunohistochemical of paraffin-embedded human colon cancer using 11290-2-AP(RPLP0 antibody) at dilution of 1:100 (under 10x lens)



HeLa cells were subjected to SDS PAGE followed by western blot with 11290-2-AP(RPLP0 antibody) at dilution of 1:300



IP Result of anti-RPLP0 (IP:11290-2-AP, 4ug; Detection:11290-2-AP 1:500) with HeLa cells lysate 4000ug.

Background

RPLP0 is first identified as a cytosolic protein which takes a part in the ribosomal stalk and interacts with RPLP1 and RPLP2. It also has potential roles in molecular transport from outside into the cells. It generally presents in multiple copies on the ribosome and have isoelectric points in the range of pH 3 to 5, in contrast to most ribosomal proteins, which are single copy and basic

Applications

Tested applications:	ELISA, WB, IHC, IP
Cited applications:	ELISA, WB
Species specificity:	Human, Mouse, Rat; other species not tested.
Cited species:	Human, mouse, rat
Calculated RPLP0 MW:	34 kDa
Observed RPLP0 MW:	34 kDa
Positive WB detected in	HeLa cells, rat liver tissue
Positive IP detected in	HeLa cells
Positive IHC detected in	Human colon cancer tissue
Recommended dilution:	WB: 1:1000-1:10000 IP: 1:200-1:2000 IHC: 1:20-1:200

Application key: WB = Western blotting, IHC = Immunohistochemistry, IF = Immunofluorescence, IP = Immunoprecipitation

Immunogen information

Immunogen:	Ag1829
GenBank accession number:	BC009867
Gene ID (NCBI):	6175
Full name:	Ribosomal protein, large, P0

Product information

Purification method:	Antigen affinity purification
Storage:	PBS with 0.1% sodium azide and 50% glycerol pH 7.3. Store at -20°C.