

RABEP1 Polyclonal Antibody

Catalog number: 14350-1-AP

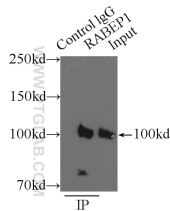
Size: 51 µg/150 µl

Source: Rabbit

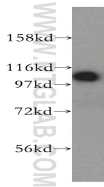
Isotype: IgG

Synonyms:

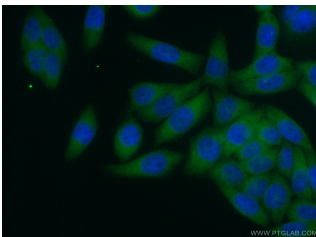
RABEP1; RAB5EP, Rabaptin 4,
Rabaptin 5, Rabaptin 5alpha,
RABEP1, RABPT5, RABPT5A



IP Result of anti-RABEP1 (IP:14350-1-AP, 3µg; Detection:14350-1-AP 1:500) with HeLa cells lysate 3800ug.



HeLa cells were subjected to SDS PAGE followed by western blot with 14350-1-AP (RABEP1 antibody) at dilution of 1:400



Immunofluorescent analysis of (10% Formaldehyde) fixed HeLa cells using 14350-1-AP (RABEP1 Antibody) at dilution of 1:50 and Alexa Fluor 488-conjugated AffiniPure Goat Anti-Rabbit IgG(H+L)

Applications

Tested applications:	ELISA, WB, IP, IF
Species specificity:	Human, Mouse, Rat; other species not tested.
Calculated RABEP1 MW:	99 kDa
Observed RABEP1 MW:	100 kDa
Positive WB detected in	HeLa cells, A431 cells, human liver tissue
Positive IP detected in	HeLa cells
Positive IF detected in	HeLa cells
Recommended dilution:	WB: 1:500-1:5000
	IP: 1:200-1:2000
	IF: 1:20-1:200

Application key: WB = Western blotting, IHC = Immunohistochemistry, IF = Immunofluorescence, IP = Immunoprecipitation

Immunogen information

Immunogen:	Ag5693
GenBank accession number:	BC041700
Gene ID (NCBI):	9135
Full name:	Rabaptin, RAB GTPase binding effector protein 1

Product information

Purification method:	Antigen affinity purification
Storage:	PBS with 0.02% sodium azide and 50% glycerol pH 7.3. Store at -20°C.