

## LDB3 Polyclonal Antibody

Catalog number: 11004-1-AP

Size: 45 µg/150 µl

Source: Rabbit

Isotype: IgG

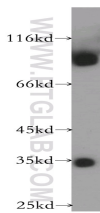
Synonyms:

LDB3; CYPHER; FLJ35865;

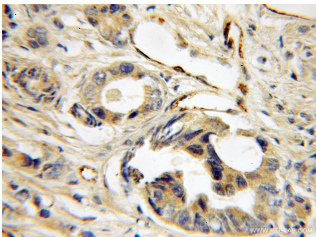
KIAA01613; KIAA0613;

ORACLE; PDLIM6; ZASP;

ldb3z1; ldb3z4



human skeletal muscle tissue were subjected to SDS PAGE followed by western blot with 11004-1-AP(LDB3 Antibody) at dilution of 1:1500



Immunohistochemistry of paraffin-embedded human prostate cancer using 11004-1-AP(LDB3 Antibody) at Dilution 1:50 (under 10x lens)

### Applications

Tested applications:	ELISA, WB, IHC
Species specificity:	Human, mouse, rat; other species not tested.
Positive WB detected in:	Human skeletal muscle tissue
Calculated LDB3 MW:	32/78kd
Observed LDB3 MW:	32kd, 78-80kd
Positive IHC detected in:	Human prostate cancer
Recommended dilution:	WB: 1:500-1:5000 IHC: 1:20-1:200

Application key: WB = Western blotting, IHC = Immunohistochemistry, IF = Immunofluorescence, IP = Immunoprecipitation, FC = Flow cytometry

### Immunogen information

Immunogen:	Ag1417
GenBank accession number:	BC010929
Gene ID (NCBI):	11155
Full name:	LIM domain binding 3

### Product information

Purification method:	Antigen affinity purification
Storage:	PBS with 0.1% sodium azide and 50% glycerol pH 7.3. Store at -20°C.