

TIMELESS Polyclonal Antibody

Catalog number: 14421-1-AP

Size: 34 µg/150 µl

Source: Rabbit

Isotype: IgG

Synonyms:

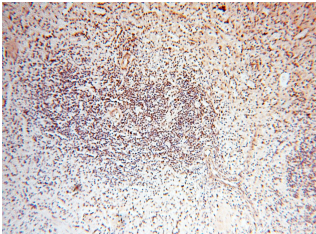
TIMELESS; FLJ12640, FLJ20714,

hTIM, Protein timeless

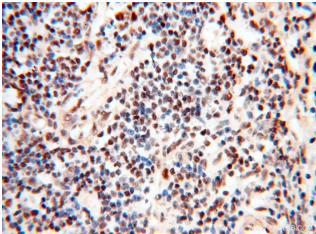
homolog, TIM, TIM1,

TIMELESS, timeless homolog

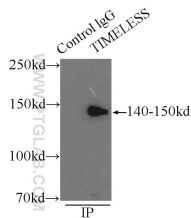
(Drosophila), TIMELESS1



Immunohistochemical of paraffin-embedded human spleen using 14421-1-AP(TIMELESS antibody) at dilution of 1:50 (under 10x lens)



Immunohistochemical of paraffin-embedded human spleen using 14421-1-AP(TIMELESS antibody) at dilution of 1:50 (under 40x lens)



IP Result of anti-TIMELESS (IP:14421-1-AP, 3µg; Detection:14421-1-AP 1:1000) with mouse testis tissue lysate 10000µg.

Background

TIMELESS1 (TIM1) gene encodes protein timeless homolog belonging to timeless family. TIM1 is localized in nucleus and regulated by cell cycle. It expresses high levels in S, G2 and M phases, and low in G0 and G1 phases. TIM1 is involved in the circadian rhythm autoregulatory loop and is a crucial component of the circadian core oscillator, which includes the CRY proteins, CLOCK, NPAS2, etc. It is also involved in cell survival after DNA damage or replication stress and reported to play important role in epithelial cell morphogenesis and formation of branching tubules.

Applications

Tested applications:	ELISA, WB, IHC, IP
Species specificity:	Human, Mouse; other species not tested.
Calculated TIMELESS MW:	139kd
Observed TIMELESS MW:	140-150 kDa
Positive WB detected in	HeLa cells, A549 cells, NIH/3T3 cells
Positive IP detected in	Mouse testis tissue
Positive IHC detected in	Human spleen, human brain, human heart, human kidney, human ovary, human placenta, human testis
Recommended dilution:	WB: 1:500 - 1:2000
	IP: 1:500 - 1:2000
	IHC: 1:25 - 1:100

Application key: WB = Western blotting, IHC = Immunohistochemistry, IF = Immunofluorescence, IP = Immunoprecipitation

Immunogen information

Immunogen:	Ag5767
GenBank accession number:	BC050557
Gene ID (NCBI):	8914
Full name:	Timeless homolog (Drosophila)

Product information

Purification method:	Antigen affinity purification
Storage:	PBS with 0.02% sodium azide and 50% glycerol pH 7.3. Store at -20°C.