

GEMIN6 Polyclonal Antibody

Catalog number: 12307-2-AP

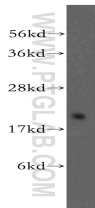
Size: 25 µg/150 µl

Source: Rabbit

Isotype: IgG

Synonyms:

GEMIN6; FLJ23459



HeLa cells were subjected to SDS PAGE followed by western blot with 12307-2-AP(GEMIN6 Antibody) at dilution of 1:500

Applications

Tested applications:	ELISA, WB
Species specificity:	Human, mouse, rat; other species not tested.
Positive WB detected in:	HeLa cells, HEK-293 cells
Calculated GEMIN6 MW:	167aa,19kd
Observed GEMIN6 MW:	19kd
Recommended dilution:	WB: 1:200-1:2000

Application key: WB = Western blotting, IHC = Immunohistochemistry, IF = Immunofluorescence, IP = Immunoprecipitation, FC = Flow cytometry

Immunogen information

Immunogen:	Ag2954
GenBank accession number:	BC018195
Gene ID (NCBI):	79833
Full name:	Gem (nuclear organelle) associated protein 6

Product information

Purification method:	Antigen affinity purification
Storage:	PBS with 0.1% sodium azide and 50% glycerol pH 7.3. Store at -20°C.