

Human IgG Polyclonal Antibody

Catalog number: 10284-1-AP

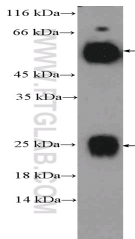
Size: 48 µg/150 µl

Source: Rabbit

Isotype: IgG

Synonyms:

Human IgG



human plasma tissue were subjected to SDS PAGE followed by western blot with 10284-1-AP (Human-IgG Antibody) at dilution of 1:5000

Background

This rabbit poly clonal antibody recognizes the human IgG.

Applications

Tested applications: ELISA, WB
Species specificity: Human; other species not tested.
Calculated Human IgG MW: 155 kDa
Observed Human IgG MW: 25 kDa, 50 kDa, 150 kDa
Positive WB detected in: Human plasma tissue
Recommended dilution: WB: 1:2000-1:20000

Application key: WB = Western blotting, IHC = Immunohistochemistry, IF = Immunofluorescence, IP = Immunoprecipitation

Immunogen information

Immunogen: Recombinant Protein
GenBank accession number:
Gene ID (NCBI):
Full name: Undefined

Product information

Purification method: Antigen affinity purification
Storage: PBS with 0.1% sodium azide and 50% glycerol pH 7.3. Store at -20°C.