

Clusterin Polyclonal Antibody

Catalog number: 12289-1-AP

Size: 30 µg/150 µl

Source: Rabbit

Isotype: IgG

Synonyms:

CLU; AAG4, Apo J, APOJ,

ApoJalpha, ApoJbeta,

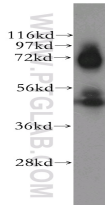
Apolipoprotein J, CLI, CLU,

clusterin, Complement cytolysis

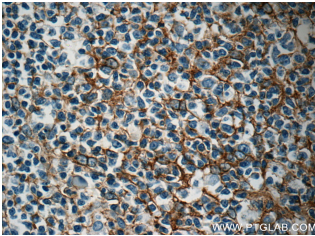
inhibitor, Ku70 binding protein

1, KUB1, NA1/NA2, SGP 2,

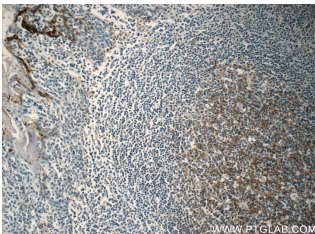
SGP2, SP 40, TRPM 2, TRPM2



Y79 cells were subjected to SDS PAGE followed by western blot with 12289-1-AP (CLU antibody) at dilution of 1:300



Immunohistochemistry of paraffin-embedded human tonsillitis tissue slide using 12289-1-AP (CLU Antibody) at dilution of 1:50 (under 40x lens)



Immunohistochemistry of paraffin-embedded human tonsillitis tissue slide using 12289-1-AP (CLU Antibody) at dilution of 1:50 (under 10x lens)

Background

Clusterin (Apolipoprotein J) is a 75-80 kDa heterodimeric glycoprotein produced by a wide array of tissues and found in most biologic fluids (PMID: 7648419; 11906815). It is encoded by one single gene and cleaved posttranslationally into α and β subunits prior to secretion from the cell. Many functions have been described for clusterin, including regulating apoptosis, transporting lipids, controlling cell interactions, regulating complement (PMID: 10694874).

Applications

Tested applications:	ELISA, WB, IHC, IP
Species specificity:	Human, Mouse, Rat; other species not tested.
Calculated Clusterin MW:	449aa, 53 kDa
Observed Clusterin MW:	70-80kd and 50kd
Positive WB detected in	Y79 cells
Positive IP detected in	Mouse brain tissue
Positive IHC detected in	Human tonsillitis tissue, human breast cancer tissue, human liver cancer tissue
Recommended dilution:	WB: 1:500-1:5000 IP: 1:200-1:2000 IHC: 1:20-1:200

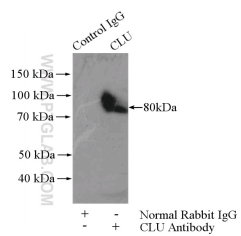
Application key: WB = Western blotting, IHC = Immunohistochemistry, IF = Immunofluorescence, IP = Immunoprecipitation

Immunogen information

Immunogen:	Ag2889
GenBank accession number:	BC010514
Gene ID (NCBI):	1191
Full name:	Clusterin

Product information

Purification method:	Antigen affinity purification
Storage:	PBS with 0.1% sodium azide and 50% glycerol pH 7.3. Store at -20°C.



IP Result of anti-CLU
(IP:12289-1-AP, 4ug;
Detection:12289-1-AP 1:800)
with mouse brain tissue lysate
4400ug.