

CEND1 Polyclonal Antibody

Catalog number: 13280-1-AP

Size: 20 µg/150 µl

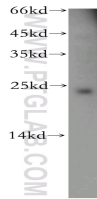
Source: Rabbit

Isotype: IgG

Synonyms:

CEND1; BM88, BM88 antigen,

CEND1, FLJ90066



human brain tissue were subjected to SDS PAGE followed by western blot with 13280-1-AP(CEND1 antibody) at dilution of 1:300

Applications

Tested applications:	ELISA, WB
Species specificity:	Human,Mouse,Rat; other species not tested.
Calculated CEND1 MW:	149aa,15 kDa
Observed CEND1 MW:	23kd
Positive WB detected in	Human brain tissue
Recommended dilution:	WB: 1:200-1:2000

Application key: WB = Western blotting, IHC = Immunohistochemistry, IF = Immunofluorescence, IP = Immunoprecipitation

Immunogen information

Immunogen:	Ag4024
GenBank accession number:	BC034732
Gene ID (NCBI):	51286
Full name:	Cell cycle exit and neuronal differentiation 1

Product information

Purification method:	Antigen affinity purification
Storage:	PBS with 0.02% sodium azide and 50% glycerol pH 7.3. Store at -20°C.