

SDF4 Polyclonal Antibody

Catalog number: 10517-1-AP

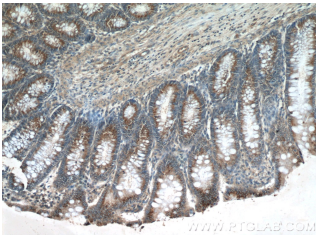
Size: 63 µg/150 µl

Source: Rabbit

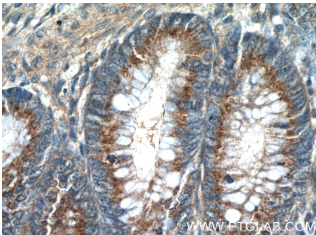
Isotype: IgG

Synonyms:

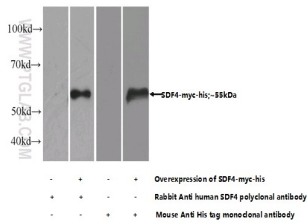
SDF4; 45 kDa calcium binding protein, Cab45, SDF 4, SDF4, stromal cell derived factor 4



Immunohistochemistry of paraffin-embedded human colon tissue slide using 10517-1-AP (SDF4 Antibody) at dilution of 1:50 (under 10x lens)



Immunohistochemistry of paraffin-embedded human colon tissue slide using 10517-1-AP (SDF4 Antibody) at dilution of 1:50 (under 40x lens)



Transfected HEK-293 cells were subjected to SDS PAGE followed by western blot with 10517-1-AP (SDF4 Antibody) at dilution of 1:1000

Applications

Tested applications:	ELISA, WB, IHC
Species specificity:	Human, Mouse, Rat; other species not tested.
Calculated SDF4 MW:	42 kDa
Observed SDF4 MW:	
Positive WB detected in	Transfected HEK-293 cells
Positive IHC detected in	Human colon tissue, human pancreas tissue
Recommended dilution:	WB: 1:500-1:5000 IHC: 1:20-1:200

Application key: WB = Western blotting, IHC = Immunohistochemistry, IF = Immunofluorescence, IP = Immunoprecipitation

Immunogen information

Immunogen:	Ag0806
GenBank accession number:	BC006211
Gene ID (NCBI):	51150
Full name:	Stromal cell derived factor 4

Product information

Purification method:	Antigen affinity purification
Storage:	PBS with 0.1% sodium azide and 50% glycerol pH 7.3. Store at -20°C.