

FAM3C Polyclonal Antibody

Catalog number: 14247-1-AP

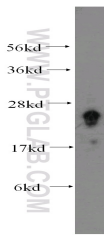
Size: 28 µg/150 µl

Source: Rabbit

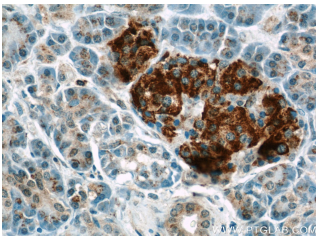
Isotype: IgG

Synonyms:

FAM3C; GS3786; ILEI



human brain tissue were subjected to SDS PAGE followed by western blot with 14247-1-AP(FAM3C Antibody) at dilution of 1:800



Immunohistochemistry of paraffin-embedded human pancreas using 14247-1-AP(FAM3C Antibody) at Dilution 1:50 (under 40x lens)

Background

FAM3C, also known as ILEI, is a secreted protein belonging to the cytokine-like protein family. FAM3C is a signaling cytokine with a GG domain, hydrophobic leader sequence and an N-terminal signal peptide. A change in expression of this protein has been noted in pancreatic cancer-derived cells. FAM3C has been involved in the epithelial to mesenchymal transition, and retinal laminar formation processes in vertebrates. Also, FAM3C may play an important role in inner ear development and thus be involved in cell differentiation and proliferation during inner ear embryogenesis.

Applications

Tested applications:	ELISA, WB, IHC
Cited applications:	WB
Species specificity:	Human, mouse, rat; other species not tested.
Cited species:	Human
Positive WB detected in:	Human brain tissue, HEK-293 cells, human heart tissue
Calculated FAM3C MW:	25kd
Observed FAM3C MW:	25kd
Positive IHC detected in:	Human pancreas
Recommended dilution:	WB: 1:200-1:2000 IHC: 1:20-1:200

Application key: WB = Western blotting, IHC = Immunohistochemistry, IF = Immunofluorescence, IP = Immunoprecipitation, FC = Flow cytometry

Immunogen information

Immunogen:	Ag5516
GenBank accession number:	BC046932
Gene ID (NCBI):	10447
Full name:	Family with sequence similarity 3, member C

Product information

Purification method:	Antigen affinity purification
Storage:	PBS with 0.02% sodium azide and 50% glycerol pH 7.3. Store at -20°C.