

ACTL6A Polyclonal Antibody

Catalog number: 10341-1-AP

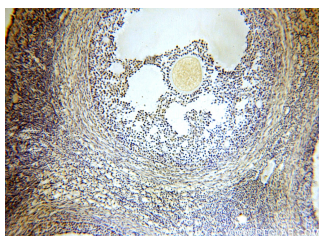
Size: 29 µg/150 µl

Source: Rabbit

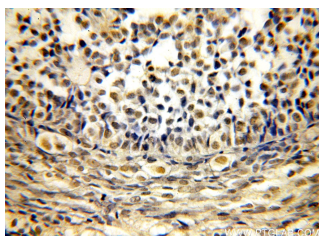
Isotype: IgG

Synonyms:

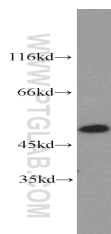
ACTL6A; actin like 6A, Actin like protein 6A, Actin related protein Baf53a, ACTL6, ACTL6A, Arp4, ARPN BETA, ArpNbeta, BAF53, BAF53A, BRG1 associated factor 53A, INO80 complex subunit K, INO80K



Immunohistochemical of paraffin-embedded human ovary using 10341-1-AP (ACTL6A antibody) at dilution of 1:50 (under 10x lens)



Immunohistochemical of paraffin-embedded human ovary using 10341-1-AP (ACTL6A antibody) at dilution of 1:50 (under 40x lens)



K-562 cells were subjected to SDS PAGE followed by western blot with 10341-1-AP (ACTL6A antibody) at dilution of 1:1000

Background

Actin-like 6A (ACTL6A, synonyms: ACTL6, BAF53A, MGC5382) is a family member of actin-related proteins (ARPs), which share significant amino acid sequence identity to conventional actins. Both actins and ARPs have an actin fold, which is an ATP-binding cleft, as a common feature. The ARPs are involved in diverse cellular processes, including vesicular transport, spindle orientation, nuclear migration and chromatin remodeling. ACTL6A is a 53 kDa subunit protein of the BAF (BRG1/brm-associated factor) complex in mammals, which is functionally related to SWI/SNF complex in *S. cerevisiae* and *Drosophila*; the latter is thought to facilitate transcriptional activation of specific genes by antagonizing chromatin-mediated transcriptional repression. Together with beta-actin, it is required for maximal ATPase activity of BRG1, and for the association of the BAF complex with chromatin/matrix.

Applications

Tested applications:	ELISA, WB, IHC, IP
Cited applications:	WB
Species specificity:	Human, Mouse, Rat; other species not tested.
Cited species:	Mouse
Calculated ACTL6A MW:	47 kDa
Observed ACTL6A MW:	45-51kd
Positive WB detected in	K-562 cells, HeLa cells
Positive IP detected in	HeLa cells
Positive IHC detected in	Human ovary tissue
Recommended dilution:	WB: 1:500-1:5000 IP: 1:200-1:2000 IHC: 1:20-1:200

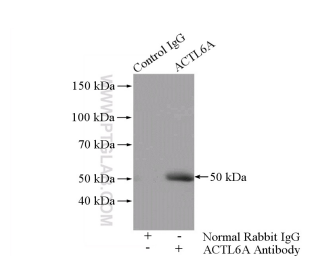
Application key: WB = Western blotting, IHC = Immunohistochemistry, IF = Immunofluorescence, IP = Immunoprecipitation

Immunogen information

Immunogen:	Ag0323
GenBank accession number:	BC001391
Gene ID (NCBI):	86
Full name:	Actin-like 6A

Product information

Purification method:	Antigen affinity purification
Storage:	PBS with 0.1% sodium azide and 50% glycerol pH 7.3. Store at -20°C.



IP Result of anti-ACTL6A

(IP:10341-1-AP, 4ug;

Detection:10341-1-AP 1:500)

with HeLa cells lysate 1200ug.