

## UBE2V1 Polyclonal Antibody

Catalog number: 10207-2-AP

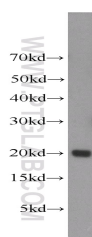
Size: 38 µg/150 µl

Source: Rabbit

Isotype: IgG

Synonyms:

UBE2V1; CIR1, CROC 1, CROC1,  
UBE2V, UBE2V1, UEV 1, UEV1,  
UEV1A



human spleen tissue were subjected to SDS PAGE followed by western blot with 10207-2-AP(UBE2V1 antibody) at dilution of 1:300

### Background

UBE2V1(Ubiquitin-conjugating enzyme E2 variant 1) is also named as CROC1, UBE2V, UEV1 and belongs to the ubiquitin-conjugating enzyme family. It has no ubiquitin ligase activity on its own and the UBE2V1-UBE2N heterodimer catalyzes the synthesis of non-canonical poly-ubiquitin chains that are linked through Lys-63. CROC1 transcripts in all human tissues examined, with highest levels in brain, skeletal muscle, and kidney(PMID:9305758). It has 5 isoforms produced by alternative splicing.

### Applications

Tested applications:	ELISA, WB
Species specificity:	Human, Mouse, Rat; other species not tested.
Calculated UBE2V1 MW:	20 kDa
Observed UBE2V1 MW:	20 kDa
Positive WB detected in	Human spleen tissue, BxPC-3 cells, mouse spleen tissue, Transfected HEK-293 cells
Recommended dilution:	WB: 1:200-1:1000

Application key: WB = Western blotting, IHC = Immunohistochemistry, IF = Immunofluorescence, IP = Immunoprecipitation

### Immunogen information

Immunogen:	Ag0278
GenBank accession number:	BC000468
Gene ID (NCBI):	7335
Full name:	Ubiquitin-conjugating enzyme E2 variant 1

### Product information

Purification method:	Antigen affinity purification
Storage:	PBS with 0.1% sodium azide and 50% glycerol pH 7.3. Store at -20°C.