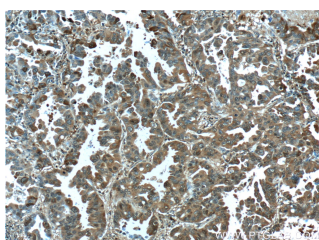
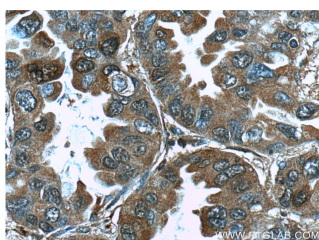


## RAB8B Polyclonal Antibody

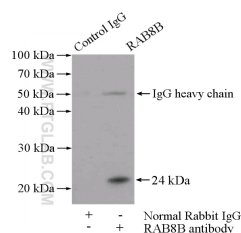
**Catalog number:** 11792-1-AP  
**Size:** 39 µg/150 µl  
**Source:** Rabbit  
**Isotype:** IgG  
**Synonyms:**  
 RAB8B; FLJ38125, RAB8,  
 RAB8B, Ras related protein Rab  
 8B



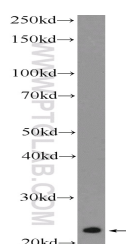
Immunohistochemistry of paraffin-embedded human lung cancer tissue slide using 11792-1-AP (RAB8B Antibody) at dilution of 1:50 (under 10x lens)



Immunohistochemistry of paraffin-embedded human lung cancer tissue slide using 11792-1-AP (RAB8B Antibody) at dilution of 1:50 (under 40x lens)



IP Result of anti-RAB8B (IP:11792-1-AP, 4µg; Detection:11792-1-AP 1:1000) with mouse brain tissue lysate 4000µg.



fetal human brain tissue were

### Applications

<b>Tested applications:</b>	ELISA, IHC, WB, IP
<b>Cited applications:</b>	IF, IHC, WB
<b>Species specificity:</b>	Human, Mouse; other species not tested.
<b>Cited species:</b>	Canine, mouse
<b>Calculated RAB8B MW:</b>	207aa, 24 kDa
<b>Observed RAB8B MW:</b>	24 kDa
<b>Positive WB detected in</b>	Fetal human brain tissue, human brain tissue
<b>Positive IP detected in</b>	Mouse brain tissue
<b>Positive IHC detected in</b>	Human lung cancer tissue, human testis tissue
<b>Recommended dilution:</b>	WB: 1:500-1:5000
	IP: 1:500-1:5000
	IHC: 1:20-1:200

Application key: WB = Western blotting, IHC = Immunohistochemistry, IF = Immunofluorescence, IP = Immunoprecipitation

### Immunogen information

<b>Immunogen:</b>	Ag2421
<b>GenBank accession number:</b>	BC020654
<b>Gene ID (NCBI):</b>	51762
<b>Full name:</b>	RAB8B, member RAS oncogene family

### Product information

<b>Purification method:</b>	Antigen affinity purification
<b>Storage:</b>	PBS with 0.1% sodium azide and 50% glycerol pH 7.3. Store at -20°C.

subjected to SDS PAGE  
followed by western blot with  
11792-1-AP( RAB8B  
Antibody) at dilution of  
1:1000