

gamma Actin Polyclonal Antibody

Catalog number: 11227-1-AP

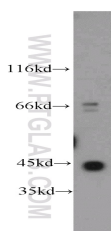
Size: 24 µg/150 µl

Source: Rabbit

Isotype: IgG

Synonyms:

ACTG1; ACT, ACTB, ACTG,
ACTG1, Actin, cytoplasmic 2,
actin, gamma 1, Gamma actin



HeLa cells were subjected to SDS
PAGE followed by western blot with
11227-1-AP(ACTG1 antibody) at
dilution of 1:500

Applications

Tested applications:	ELISA, WB
Species specificity:	Human, Mouse, Rat; other species not tested.
Calculated gamma Actin MW:	42 kDa
Observed gamma Actin MW:	42-45 kDa
Positive WB detected in	HeLa cells, A549 cells, mouse kidney tissue, mouse lung tissue
Recommended dilution:	WB: 1:200-1:2000

Application key: WB = Western blotting, IHC = Immunohistochemistry, IF = Immunofluorescence, IP = Immunoprecipitation

Immunogen information

Immunogen:	Ag1728
GenBank accession number:	BC009848
Gene ID (NCBI):	71
Full name:	Actin, gamma 1

Product information

Purification method:	Antigen affinity purification
Storage:	PBS with 0.1% sodium azide and 50% glycerol pH 7.3. Store at -20°C.