

For Research Use Only



alpha Actin POLYCLONAL ANTIBODY

Catalog Number: 23082-1-AP

1 Publications

Basic Information

Catalog Number:
23082-1-AP
Size:
35 µg/150 µl
Source:
Rabbit
Isotype:
IgG
Purification Method:
Antigen affinity purification
Immunogen Catalog Number:
AG19482

GenBank Accession Number:
BC009978
GeneID (NCBI):
70
Full Name:
actin, alpha, cardiac muscle 1
Calculated MW:
377aa, 42 kDa
Observed MW:
42-45 kDa

Recommended Dilutions:
WB 1:500-1:5000
IHC 1:20-1:200

Applications

Tested Applications:
ELISA, IHC, WB
Cited Applications:
WB
Species Specificity:
Human, Mouse

Positive Controls:
WB : mouse heart tissue;
IHC : human heart tissue; human colon tissue,
human skeletal muscle tissue, human small
intestine tissue

Background Information

Notable Publications

Author	Pubmed ID	Journal	Application
Hideshi Okada	25466765	Circ Heart Fail	WB

Storage

Storage:
Store at -20°C. Stable for one year after shipment.
Storage Buffer:
PBS with 0.02% sodium azide and 50% glycerol pH 7.3.
Aliquoting is unnecessary for -20°C storage

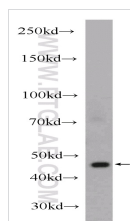
For technical support and original validation data for this
product please contact:

T: 1 (888) 4PTGLAB (1-888-478-4522) (toll
free in USA), or 1(312) 455-8498 (outside
USA)

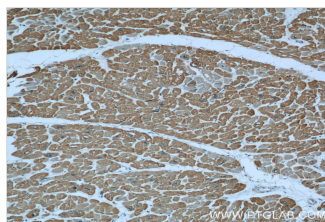
E: proteintech@ptglab.com
W: ptglab.com

This product is exclusively available under
Proteintech Group brand and is not available to
purchase from any other manufacturer.

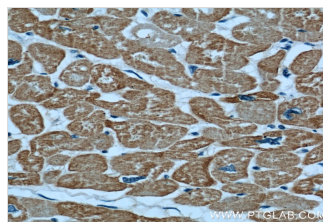
Selected Validation Data



mouse heart tissue were subjected to SDS PAGE followed by western blot with Z3082-1-AP(ACTC1 Antibody) at dilution of 1:1000



Immunohistochemical of paraffin-embedded human heart using Z3082-1-AP(ACTC1 antibody) at dilution of 1:100 (under 10x lens)



Immunohistochemical of paraffin-embedded human heart using Z3082-1-AP(ACTC1 antibody) at dilution of 1:100 (under 40x lens)