

6*his,His tag Polyclonal Antibody

Catalog number: 10001-0-AP

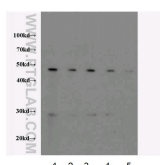
Size: 60 µg/150 µl

Source: Rabbit

Isotype: IgG

Synonyms:

6 his, 6*his,His tag, his tag



His-tagged fusion protein (15ng/lane) was subjected to SDS-PAGE followed by Western Blot with 10001-0-AP at dilution of
Lane 1 1:1,000
Lane 2 1:2,000
Lane 3 1:3,000
Lane 4 1:4,000
Lane 5 1:5,000

Western blot of 6*His-tagged fusion protein with anti-6*HIS tag (10001-0-AP) at various dilutions.

Background

Protein tags are protein or peptide sequences located either on the C- or N-terminal of the target protein, which facilitates one or several of the following characteristics: solubility, detection, purification, localization and expression. His tag is often used for affinity purification and binding assays. Expressed His-tagged proteins can be purified and detected easily because the string of histidine residues binds to several types of immobilized metal ions, including nickel, cobalt and copper, under specific buffer conditions. The antibody reacts specifically with the 6*His tag fused to recombinant protein.

Applications

Tested applications:	ELISA, WB
Cited applications:	WB
Species specificity:	Recombinant protein; other species not tested.
Cited species:	Tag, virus
Calculated 6*his,His tag MW:	1 kDa
Observed 6*his,His tag MW:	
Positive WB detected in	Recombinant protein
Recommended dilution:	WB: 1:1000-1:5000

Application key: WB = Western blotting, IHC = Immunohistochemistry, IF = Immunofluorescence, IP = Immunoprecipitation

Immunogen information

Immunogen:	Recombinant Protein
GenBank accession number:	
Gene ID (NCBI):	
Full name:	Undefined

Product information

Purification method:	Antigen affinity purification
Storage:	PBS with 0.1% sodium azide and 50% glycerol pH 7.3. Store at -20°C.