

Paxillin Polyclonal Antibody

Catalog number: 10029-1-Ig

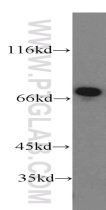
Size: 94 µg/150 µl

Source: Rabbit

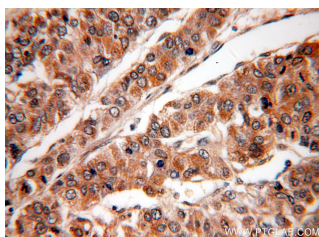
Isotype: IgG

Synonyms:

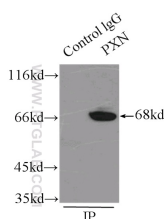
PXN; FLJ16691, paxillin, PXN



mouse brain tissue were subjected to SDS PAGE followed by western blot with 10029-1-Ig(PXN antibody) at dilution of 1:1000



Immunohistochemical of paraffin-embedded human liver cancer using 10029-1-Ig(PXN antibody) at dilution of 1:50 (under 40x lens)



IP Result of anti-PXN (IP:10029-1-Ig, 3ug; Detection:10029-1-Ig 1:1000) with mouse brain tissue lysate 7500ug.

Background

PXN (paxillin) is a 68 kDa scaffold protein that interacts with multiple structural and signaling proteins and regulates cell adhesion, migration, proliferation, and apoptosis. PXN is thought to play an important role in tumor migration, invasion, and metastasis (21045234). PXN has been identified as a direct substrate of protein tyrosine phosphatase receptor-type T (PTPRT), a potent tumor suppressor gene. Increased phospho-PXN at tyrosine residue 88 (Y88) has been found as a common feature of human colon cancers (20133777).

Applications

Tested applications:	ELISA, WB, IHC, IP, IF
Species specificity:	Human, Mouse; other species not tested.
Calculated Paxillin MW:	68 kDa
Observed Paxillin MW:	68 kDa
Positive WB detected in	Mouse brain tissue, COLO 320 cells, Jurkat cells, MCF7 cells
Positive IP detected in	Mouse brain tissue
Positive IHC detected in	Human liver cancer tissue
Positive IF detected in	NIH/3T3 cells
Recommended dilution:	WB: 1:1000-1:10000 IP: 1:500-1:5000 IHC: 1:20-1:200 IF: 1:20-1:200

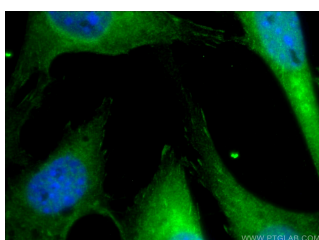
Application key: WB = Western blotting, IHC = Immunohistochemistry, IF = Immunofluorescence, IP = Immunoprecipitation

Immunogen information

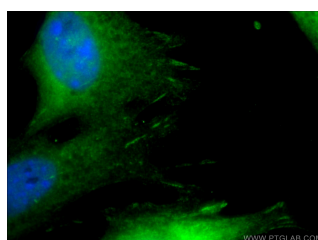
Immunogen:	Recombinant Protein
GenBank accession number:	NM_002859
Gene ID (NCBI):	5829
Full name:	Paxillin

Product information

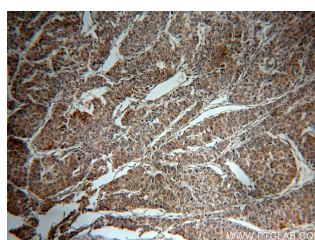
Purification method:	Protein A purification
Storage:	PBS with 0.1% sodium azide and 50% glycerol pH 7.3. Store at -20°C.



Immunofluorescent analysis of (-20 Ethanol) fixed NIH/3T3 cells using 10029-1-Ig(Paxillin Antibody) at



Immunofluorescent analysis of (-20 Ethanol) fixed NIH/3T3 cells using 10029-1-Ig(Paxillin Antibody) at



Immunohistochemical of paraffin-embedded human liver cancer using 10029-1-Ig(PXN antibody) at dilution

dilution of 1:50 and Alexa
Fluor 488-conjugated
AffiniPure Goat Anti-Rabbit
IgG(H+L)

dilution of 1:50 and Alexa
Fluor 488-conjugated
AffiniPure Goat Anti-Rabbit
IgG(H+L)

of 1:50 (under 10x lens)