

ACTL7B Polyclonal Antibody

Catalog number: 13537-1-AP

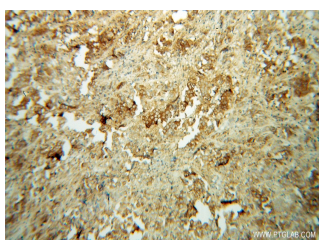
Size: 31 µg/150 µl

Source: Rabbit

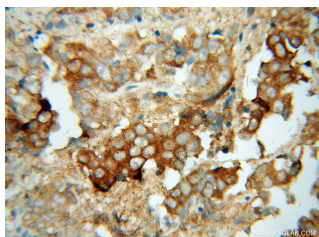
Isotype: IgG

Synonyms:

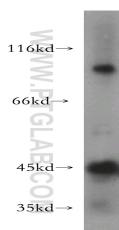
ACTL7B; Actin like 7 beta, actin like 7B, Actin like protein 7B, ACTL7B



Immunohistochemical of paraffin-embedded human prostate cancer using 13537-1-AP (ACTL7B antibody) at dilution of 1:100 (under 10x lens)



Immunohistochemical of paraffin-embedded human prostate cancer using 13537-1-AP (ACTL7B antibody) at dilution of 1:100 (under 40x lens)



human testis tissue were subjected to SDS PAGE followed by western blot with 13537-1-AP (ACTL7B antibody) at dilution of 1:300

Applications

Tested applications:	ELISA, WB, IHC
Species specificity:	Human, Mouse, Rat; other species not tested.
Calculated ACTL7B MW:	415aa, 45 kDa
Observed ACTL7B MW:	45 kDa
Positive WB detected in	Human testis tissue, human liver tissue, mouse testis tissue
Positive IHC detected in	Human prostate cancer tissue
Recommended dilution:	WB: 1:500-1:5000 IHC: 1:20-1:200

Application key: WB = Western blotting, IHC = Immunohistochemistry, IF = Immunofluorescence, IP = Immunoprecipitation

Immunogen information

Immunogen:	Ag4460
GenBank accession number:	BC033789
Gene ID (NCBI):	10880
Full name:	Actin-like 7B

Product information

Purification method:	Antigen affinity purification
Storage:	PBS with 0.02% sodium azide and 50% glycerol pH 7.3. Store at -20°C.