

## alpha Actin Polyclonal Antibody

Catalog number: 11032-1-AP

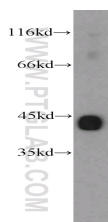
Size: 35 µg/150 µl

Source: Rabbit

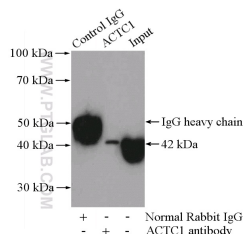
Isotype: IgG

Synonyms:

ACTC1; ACTC, ACTC1, ACTC1  
cardiac muscle 1, Actin, alpha  
cardiac muscle 1, actin, alpha,  
cardiac muscle 1, Alpha actin,  
Alpha cardiac actin, CMD1R,  
CMH11



mouse heart tissue were subjected to SDS PAGE followed by western blot with 11032-1-AP(ACTC1 antibody) at dilution of 1:800



IP Result of anti-ACTC1 (IP:11032-1-AP, 4ug; Detection:11032-1-AP 1:800) with mouse heart tissue lysate 3200ug.

### Applications

Tested applications:	ELISA, WB, IP
Cited applications:	IHC
Species specificity:	Human, Mouse, Rat; other species not tested.
Cited species:	Human
Calculated alpha Actin MW:	377aa, 42 kDa
Observed alpha Actin MW:	42 kDa
Positive WB detected in	Mouse heart tissue, mouse skeletal muscle tissue, mouse thymus tissue
Positive IP detected in	Mouse heart tissue
Recommended dilution:	WB: 1:200-1:2000 IP: 1:200-1:2000

Application key: WB = Western blotting, IHC = Immunohistochemistry, IF = Immunofluorescence, IP = Immunoprecipitation

### Immunogen information

Immunogen:	Ag1471
GenBank accession number:	BC009978
Gene ID (NCBI):	70
Full name:	Actin, alpha, cardiac muscle 1

### Product information

Purification method:	Antigen affinity purification
Storage:	PBS with 0.1% sodium azide and 50% glycerol pH 7.3. Store at -20°C.