

## GST Tag Polyclonal Antibody

**Catalog number:** 10000-0-AP

**Size:** 77 µg/150 µl

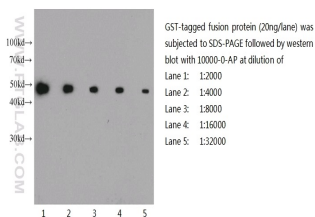
**Source:** Rabbit

**Isotype:** IgG

**Synonyms:**

**Glutathione S-Transferase, GST,**

**gst tag**



**Western blot of GST-tagged fusion protein with anti-GST-tag (10000-0-AP) at various dilutions.**

### Background

GST(Glutathione S-Transferase) is a widely used protein tag encoded by the *Schistosoma japonicum*. GST provides both an easily detectable tag and a simple purification process with little effect on the biological function of the protein of interest. This GST-fusion protein can then be purified from cells via its high affinity for glutathione. Antibodies to GST are useful for checking protein expression both in plaques and on western blots as well as for immunoaffinity purification of proteins expressed in cells. This antibody can be used to detect the GST tagged protein.

### Applications

<b>Tested applications:</b>	ELISA, WB
<b>Cited applications:</b>	WB
<b>Species specificity:</b>	Recombinant protein; other species not tested.
<b>Cited species:</b>	Tag
<b>Calculated GST Tag MW:</b>	26kd
<b>Observed GST Tag MW:</b>	
<b>Positive WB detected in</b>	Recombinant protein
<b>Recommended dilution:</b>	WB: 1:2000-1:20000

Application key: WB = Western blotting, IHC = Immunohistochemistry, IF = Immunofluorescence, IP = Immunoprecipitation

### Immunogen information

<b>Immunogen:</b>	Recombinant Protein
<b>GenBank accession number:</b>	FN315687
<b>Gene ID (NCBI):</b>	
<b>Full name:</b>	Undefined

### Product information

<b>Purification method:</b>	Antigen Affinity purified
<b>Storage:</b>	PBS with 0.1% sodium azide and 50% glycerol pH 7.3. Store at -20°C.